

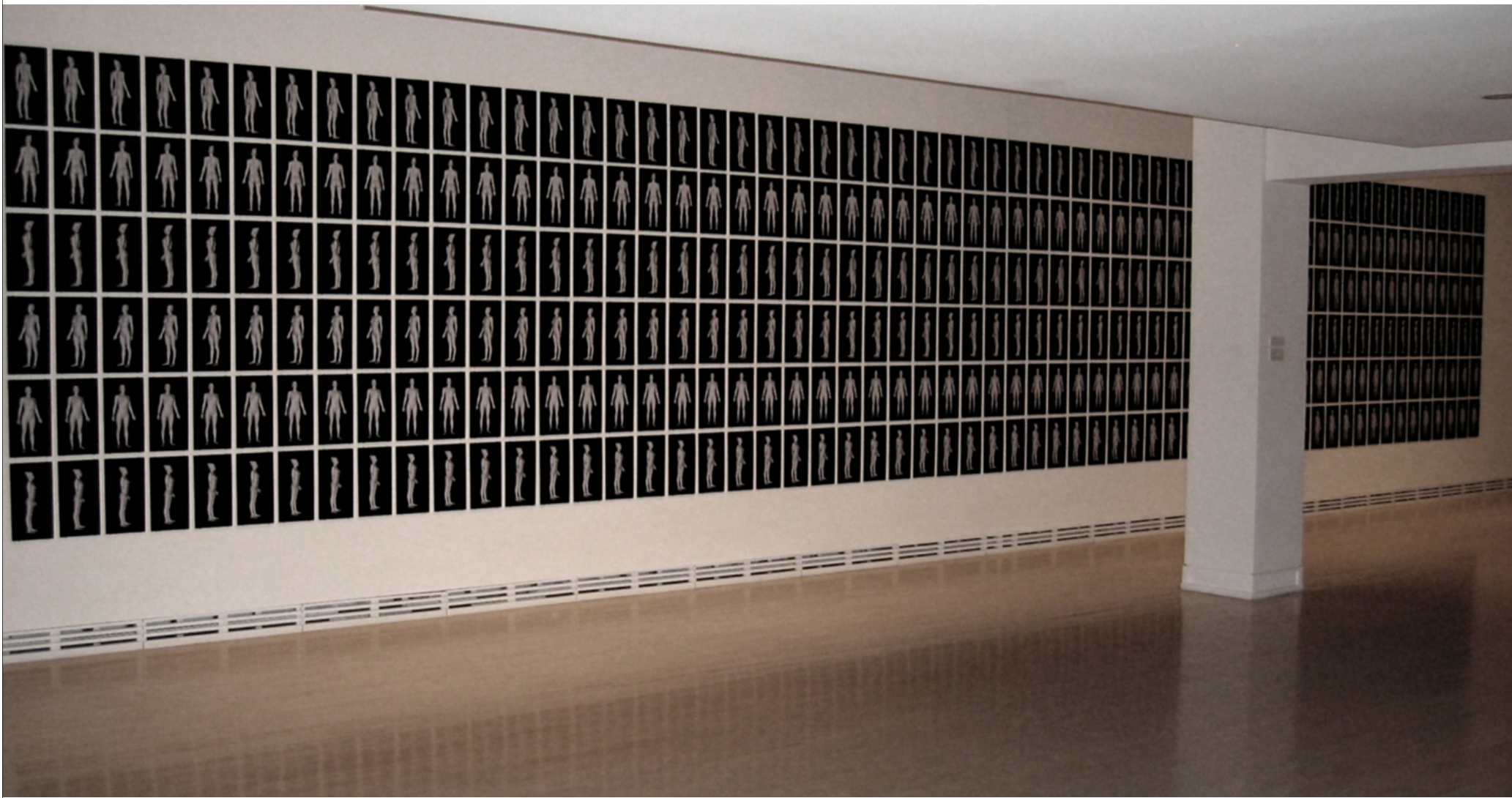
nichola feldman-kiss

mean body (as in standard) 2001 – 2006

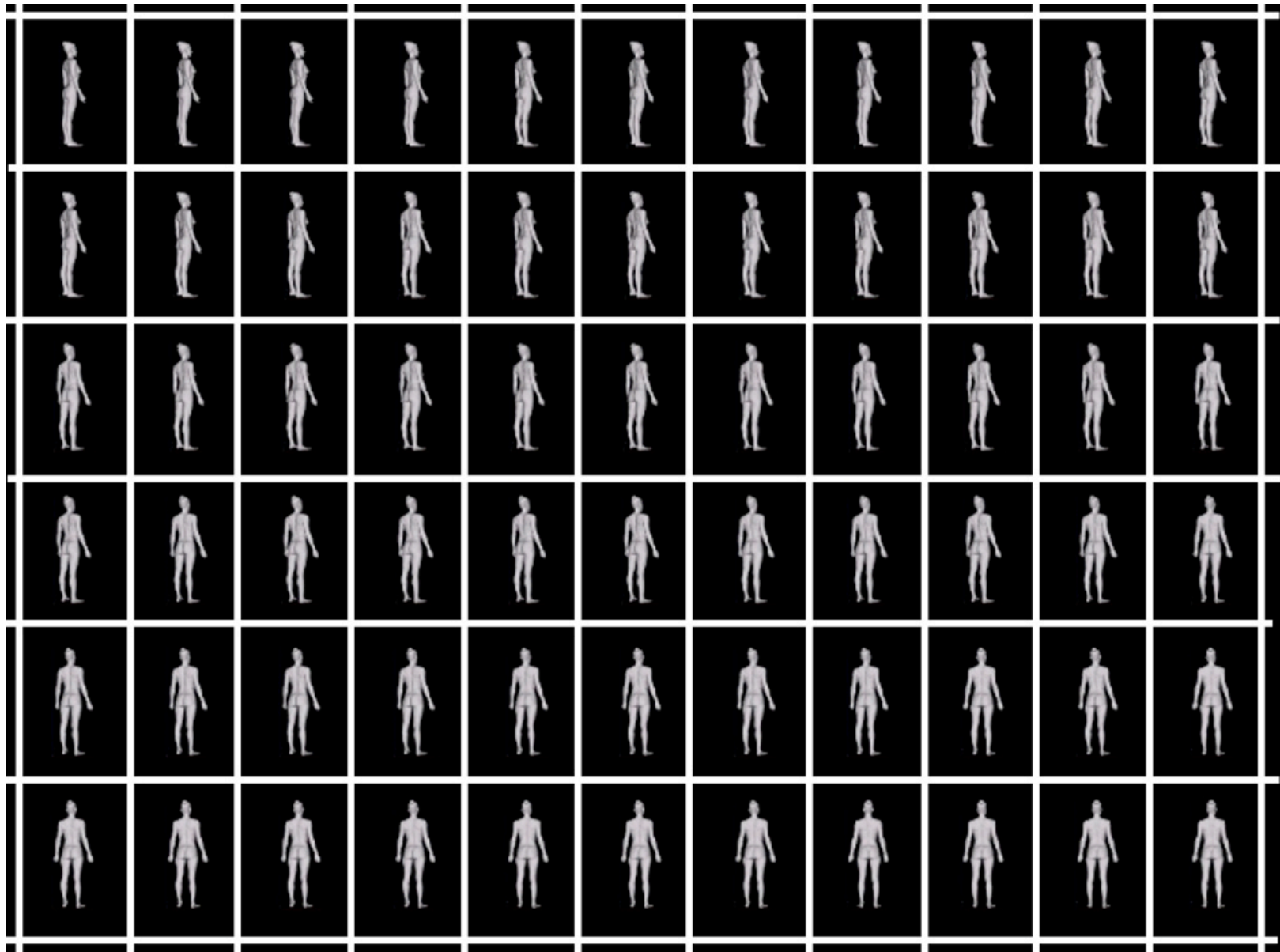
*a crowd of one self
360 1° rotational views
the imperceptible movie
classically bound
the chimaera set*

the mean body database, 2001 – ongoing

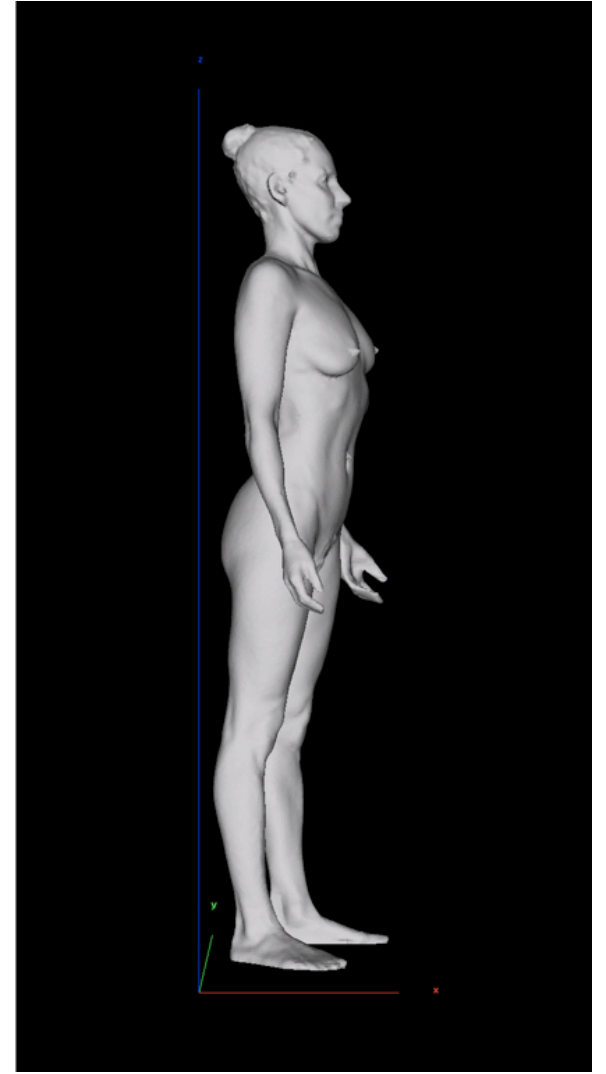
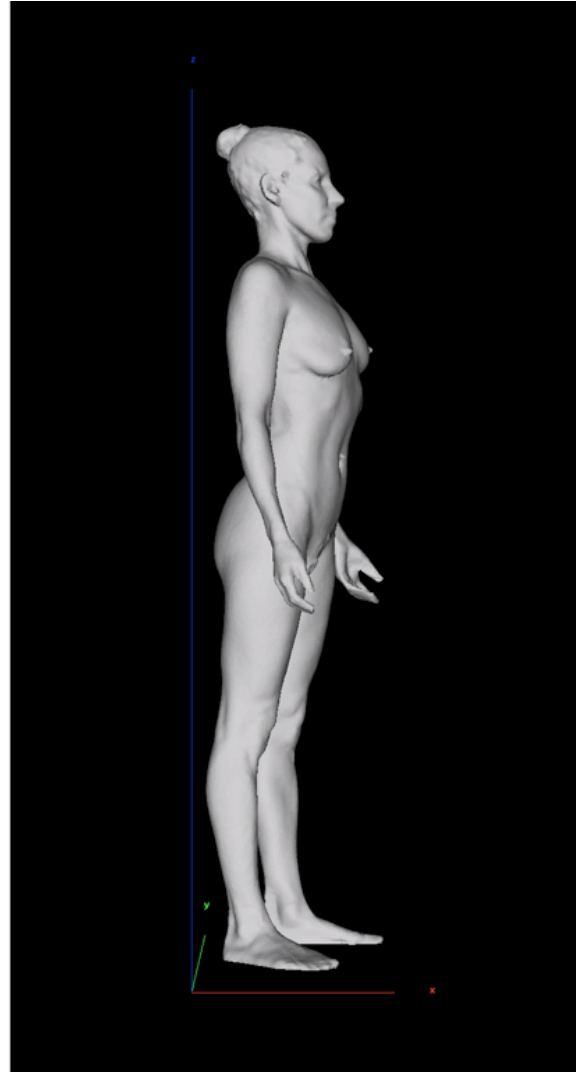
mean body (as in standard) is an expanded performance of self portraiture. For this project I trained my body for eight months towards an idealized body shape. I captured my body geometry with a 3 dimensional laser scanner and created a database for the art and science study of body shape. The *mean body database* consists of 82 surface anthropometric data sets. *mean body* has been produced with special thanks to the National Research Council of Canada, Cyberware, Freeform Fabrication Lab, University of Montreal and Carleton University Department of Industrial Design. The Canada Council for the Arts, the Ontario Arts Council and the City of Ottawa Arts and Heritage have contributed funds to this project.



360 1° rotational views is composed of 360 perspective views of a single *mean body* figure captured at 1 degree intervals as displayed in a 3 dimensional graphical user interface. For this work I am posed in the standard erect posture used for scientific and technical study of human body geometry. Installation detail, *nichola feldman:/mean body* Carleton University Art Gallery, Ottawa, Canada, 2006,



360 1° rotational views, digital detail



360 1° rotational views, 2001 & 2005 (digital detail), 360 dry mounted ink jet prints 20x35cm, installation 29 square meters, is composed of 360 perspective views of a single *mean body* data set captured at 1 degree intervals as displayed in a 3 dimensional graphical user interface. For this work the figure is posed in the standard erect posture used for scientific and technical study of human body geometry.



a crowd of one self, 2002 (prototype)
rapid prototype (stereo laser sintering) stainless steel, 29cm

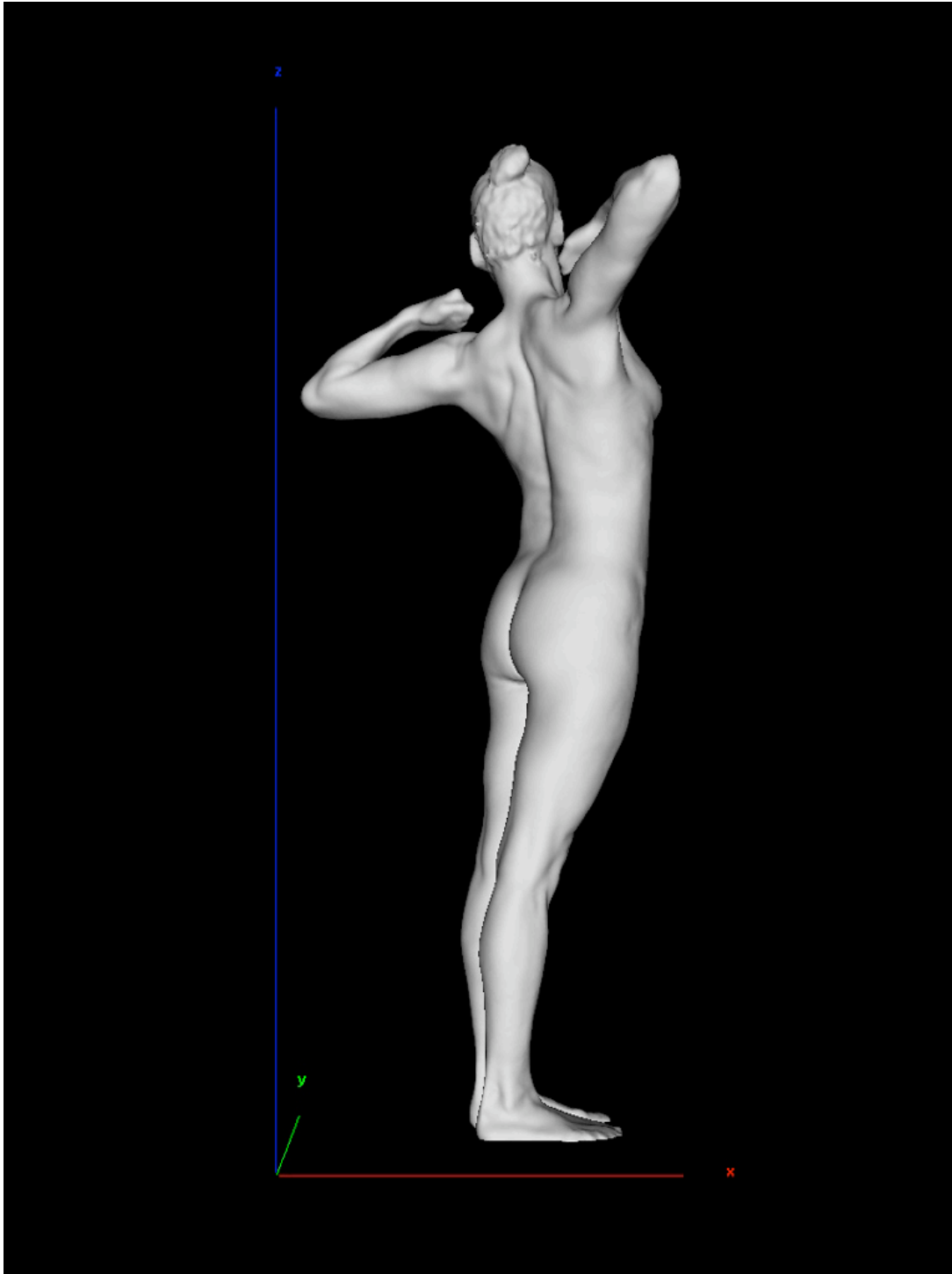


a crowd of one self, 2006 (installation detail)

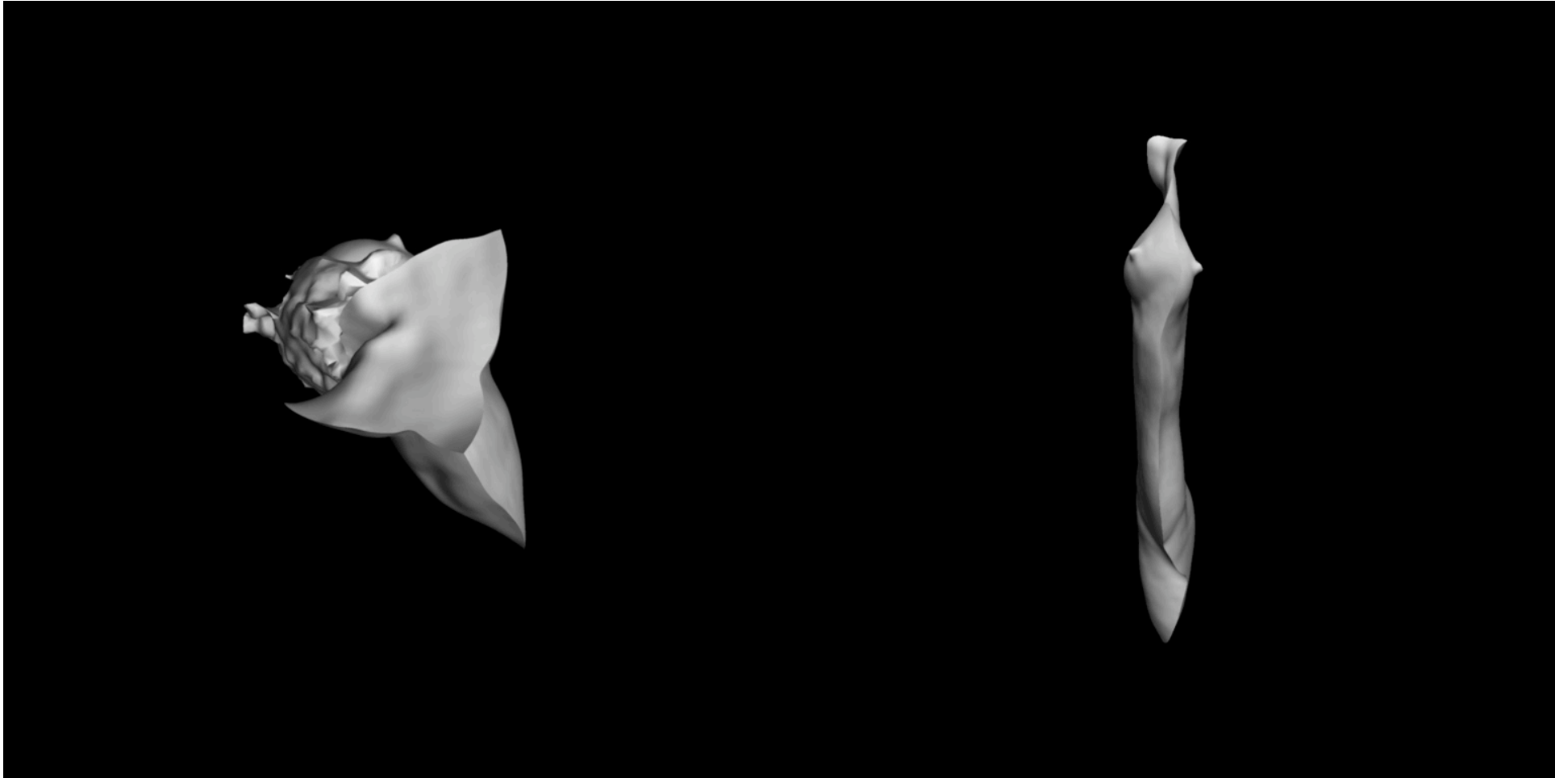
12 bronze figures, three-dimensional whole body laser scan, rapid cast (rapid prototype / lost stereo lithographic resin), patina, variable dimensions



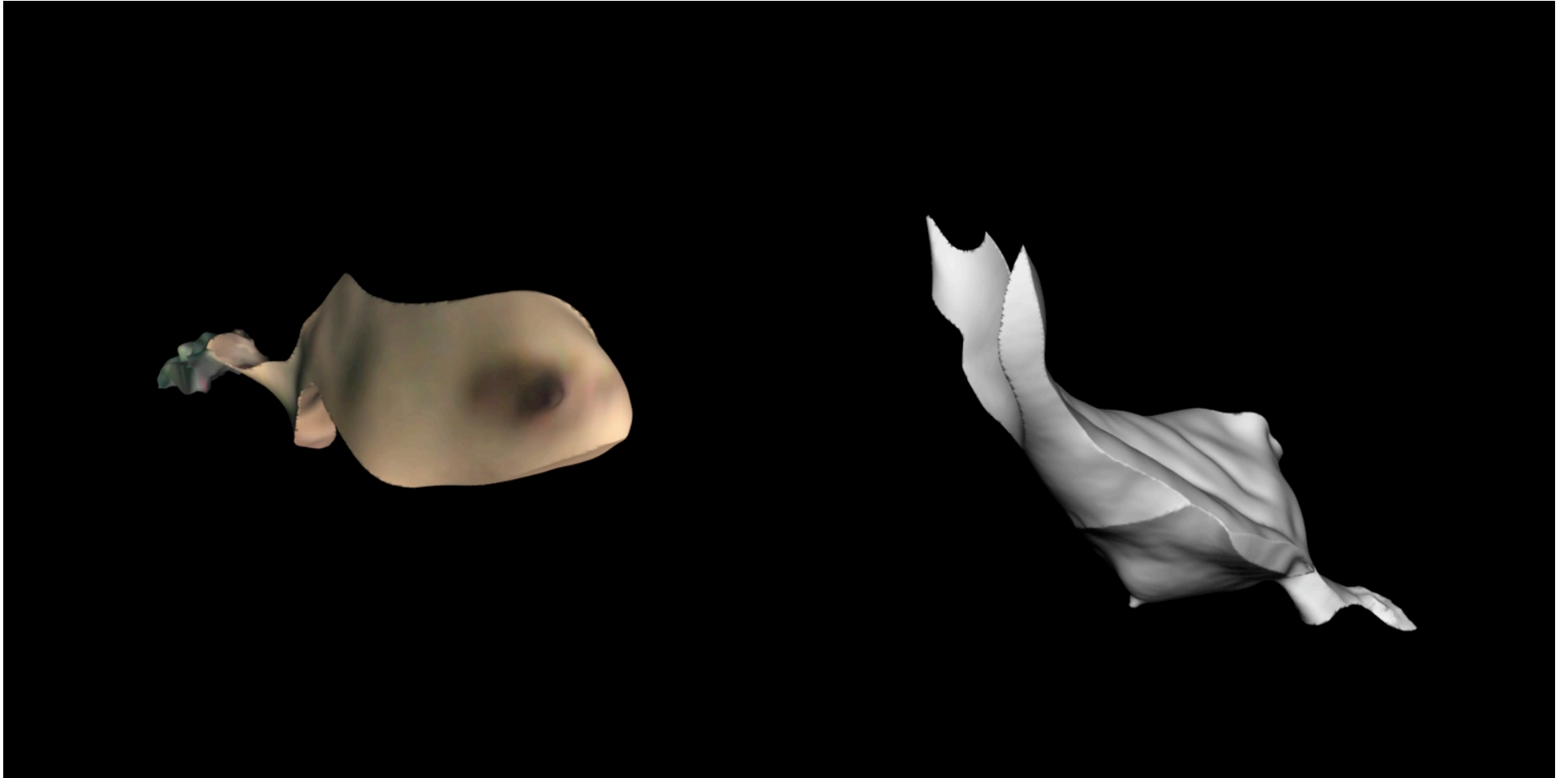




the imperceptible movie, 2005, three-dimensional whole body scan, 1440 digital photographs, 28 minute rear projected video loop. The *mean body* figure slowly turns 360 degrees on the x axis. The video is both a very slow motion 3 dimensional digital animation and an extended photograph.

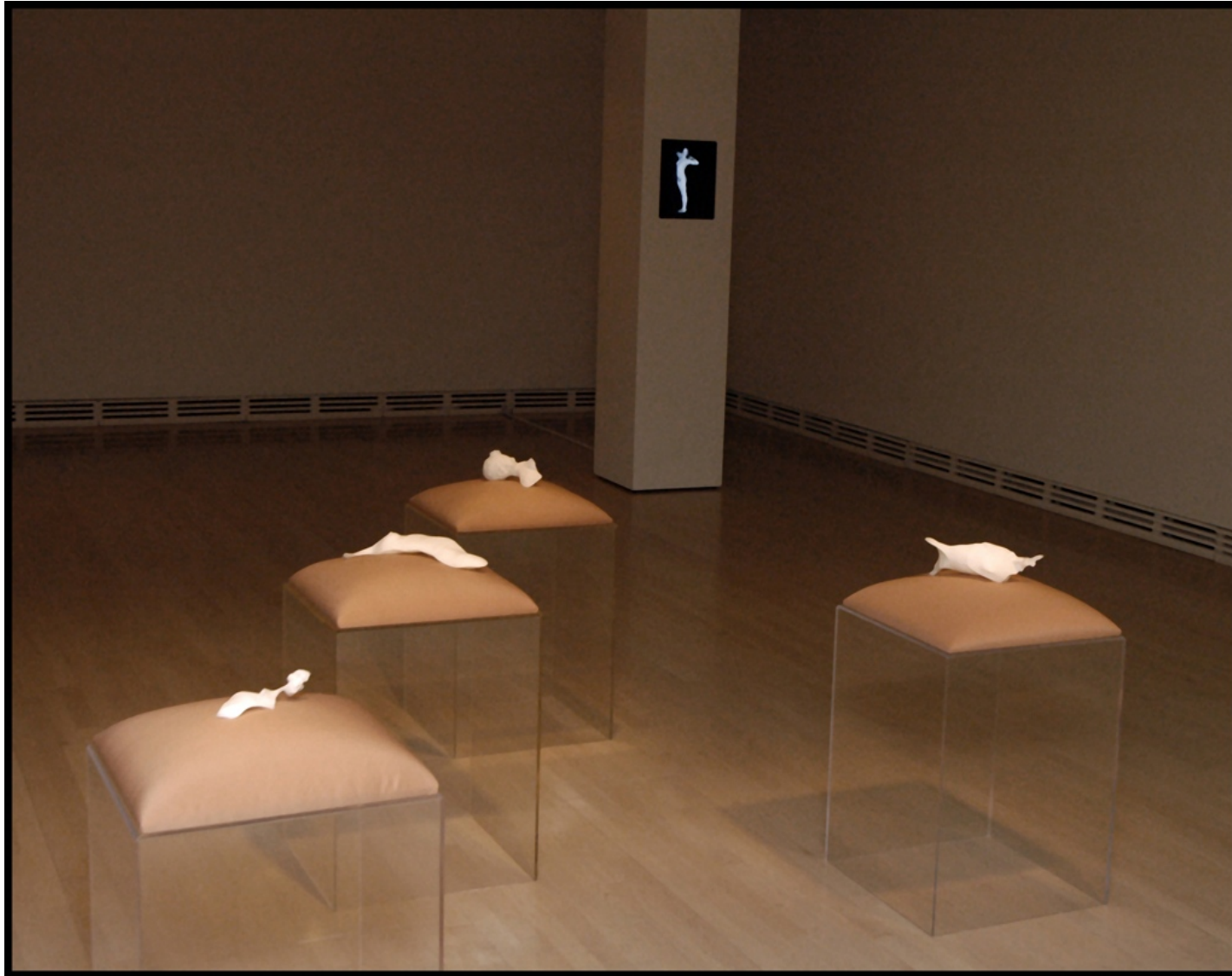


the chimaera set, 2005 – ongoing, (digital sculpture, 105x105cm light boxes) endeavors to describe the figures in the *mean body* database in light of their similarities and differences. These composite figures, which are created from two or more *mean body* data sets, are intended to reference the body without indicating it literally. Using three-dimensional software processes, I have sought to achieve shapes that have been reduced to the most minimal bodily attributes so that, while recognizable, they have no specific referent.



the chimaera set expresses my fascination with the disturbing and uncanny aspects of new medical technologies for producing the human body and hybrid life forms. To produce the chimaera series, I continue to explore ethical considerations in stem cell research and artificial life research.



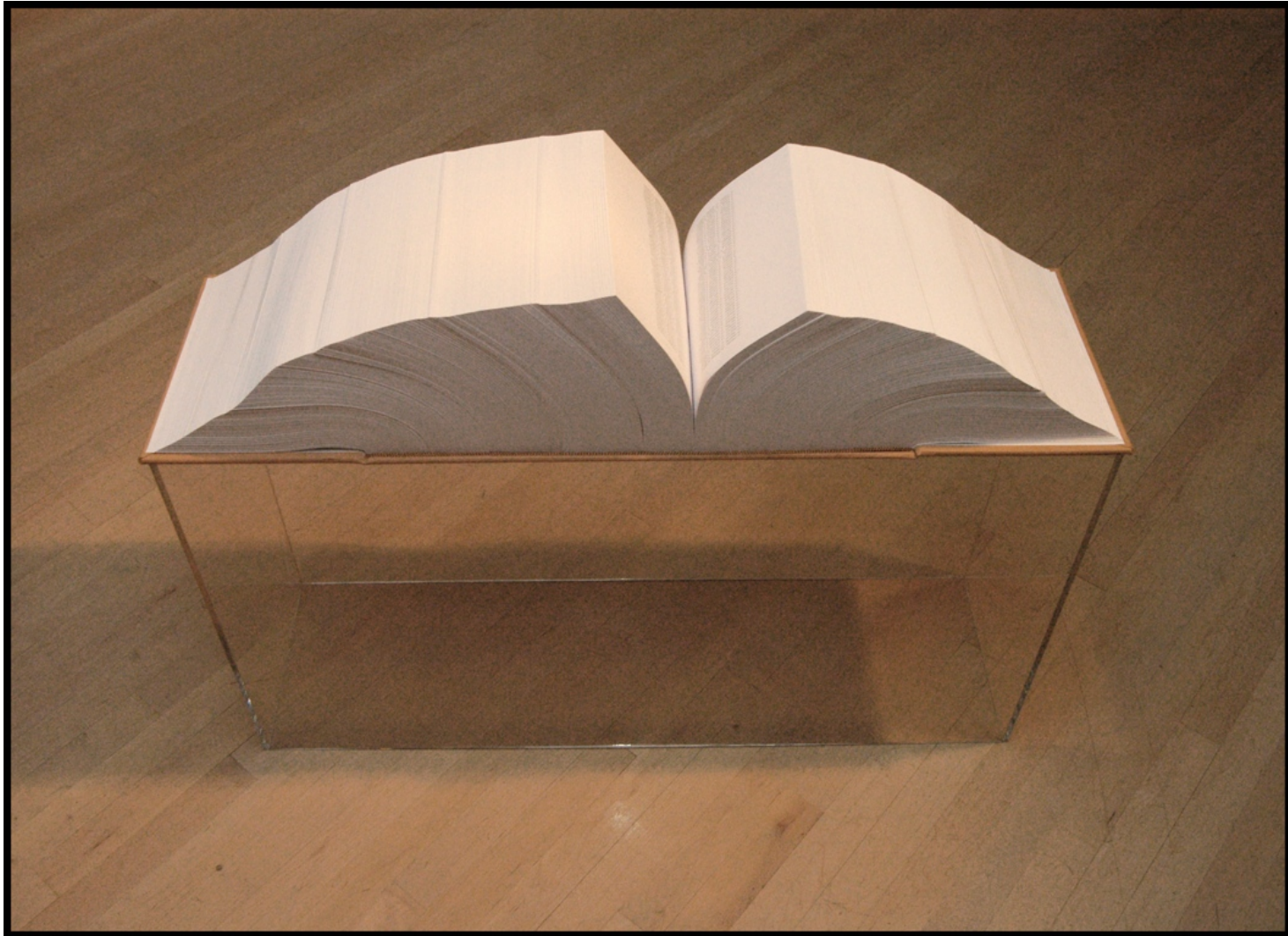


the chamaera set, 2006, three-dimensional whole body scans, 4 digital sculptures, rapid prototype (Fused Deposition Modeling with Acrylonitrile Butadiene Styrene), 40% life size

the imperceptible movie, 2005, digital video loop







classically bound, 2005-2006, (12.4 MB source code, paper, pigskin, 44x23x28cm) This is a volume of 7662 pages listing the xyz coordinate data points that describe the 203,144 triangles that define the space occupied by my body surface. In this work I am posed in the standard erect posture used for scientific and technical study of human body geometry (x indicates horizontality, y indicates depth, and z indicates verticality). The volume's front and spine binding panels are embossed with the file directory title: nicholafeldman-kiss:\meanbody\classicallybound\120302\23:11.16.



sketch for *classically bound* (8000) page book prototype)

```

#VRML V2.0 utf8
# File generated by InnovMetric Software Inc.
# 101572 vertices, 203144 triangles.
# 1 blocks.
# Input directory:nicholafeldman-kiss:\meanbody\classicallybound\120302\23:11.16
Transform { children [
  WorldInfo {
    info [ "Input Format: stl" ]
  }
  Viewpoint {
    position 0.04056 0.141728 2.67119
    orientation 0 0 1 0
  }
  # Block 1
  Shape {
    appearance Appearance { material
      Material {
        diffuseColor 0.8 0.8 0.8
        transparency 0
      }
    }
    geometry IndexedFaceSet {
      coord
      Coordinate {
        point [ -0.113066 0.204142 0.152143,
          -0.10931 0.202748 0.151563,
          -0.113066 0.209101 0.156253,
          -0.108172 0.209504 0.159677,
          -0.102989 0.205998 0.158114,
          -0.0993221 0.205896 0.159937,
          -0.0943986 0.202492 0.156596,
          -0.0892896 0.20249 0.159927,
          -0.101409 0.201287 0.15198,
          -0.0982259 0.201319 0.15294,
          -0.103922 0.204556 0.155545,
          -0.099112 0.203355 0.156012,
          -0.0957395 0.199457 0.150889,
          -0.094149 0.200333 0.153099,
          -0.104693 0.20134 0.151033,
          -0.0892642 0.199518 0.155019,
          -0.0873734 0.19876 0.156344,
          -0.092763 0.19943 0.152161,
          0.098075 0.27727 -0.508001,
          0.101242 0.274345 -0.508001,
          0.098663 0.277353 -0.511999,
          0.09548 0.280307 -0.511999,
          0.094767 0.280206 -0.508001,
          0.088748 0.286177 -0.508001,
          0.091753 0.283144 -0.508001,
          0.090602 0.285125 -0.511999,
          0.088252 0.288108 -0.511999,
          0.088083 0.286985 -0.508001,
          0.085718 0.289828 -0.508001,
          0.083259 0.292598 -0.508001,
          0.085848 0.290896 -0.511999,

```

```

0.083403 0.293392 -0.511999,
0.080766 0.29525 -0.508001,
0.080941 0.295857 -0.511999,
0.078162 0.297189 -0.508001,
0.078347 0.297809 -0.511999,
0.075501 0.298973 -0.508001,
0.075637 0.299552 -0.511999,
0.072915 0.300763 -0.508001,
0.072988 0.30124 -0.511999,
0.070146 0.302124 -0.508001,
0.070225 0.302481 -0.511999,
0.067309 0.303107 -0.508001,
0.064304 0.303724 -0.508001,
0.064431 0.304217 -0.511999,
0.061468 0.304745 -0.511999,
0.061337 0.304252 -0.508001,
0.058421 0.304967 -0.511999,
0.058304 0.304535 -0.508001,
0.055257 0.304754 -0.511999,
0.055143 0.304322 -0.508001,
0.051995 0.304169 -0.511999,
0.051963 0.304045 -0.508001,
0.048701 0.303463 -0.511999,
0.048701 0.303463 -0.508001,
0.045308 0.302385 -0.508001,
0.045257 0.302198 -0.511999,
0.042045 0.3018 -0.508001,
0.041962 0.301492 -0.511999,
0.038849 0.301466 -0.508001,
0.038767 0.301155 -0.511999,
0.035638 0.301066 -0.508001,
0.035603 0.300942 -0.511999,
0.032439 0.300728 -0.508001,
0.032407 0.300608 -0.511999,
0.029243 0.300395 -0.508001,
0.029211 0.300271 -0.511999,
0.025948 0.299685 -0.508001,
0.025964 0.299749 -0.511999,
0.022536 0.298547 -0.511999,
0.022549 0.298614 -0.508001,
0.018959 0.297053 -0.508001,
0.010367 0.2895 -0.508001,
0.013347 0.292881 -0.508049,
0.010879 0.2895 -0.511999,
0.008962 0.286498 -0.511999,
0.008319 0.286498 -0.508001,
-0.010175 0.253501 -0.508001,
-0.009215 0.256499 -0.508001,
-0.00896 0.253501 -0.511999,
-0.009536 0.250499 -0.511999,
-0.011008 0.250499 -0.508001,
-0.009727 0.2475 -0.511999,
-0.011625 0.247628 -0.508001,
-0.01229 0.244499 -0.508001,
-0.012798 0.2475 -0.504001,

```

19063, 19064, 19353, -1,
19354, 19353, 19064, -1,
19064, 19065, 19354, -1,
19355, 19354, 19065, -1,
19065, 19066, 19355, -1,
19356, 19355, 19066, -1,
19066, 19067, 19356, -1,
19357, 19356, 19067, -1,
19067, 19068, 19357, -1,
19358, 19357, 19068, -1,
19068, 19069, 19358, -1,
19359, 19358, 19069, -1,
19069, 19070, 19359, -1,
19360, 19359, 19070, -1,
19070, 19071, 19360, -1,
19361, 19360, 19071, -1,
19071, 19072, 19361, -1,
19362, 19361, 19072, -1,
19072, 19073, 19362, -1,
19363, 19362, 19073, -1,
19073, 19074, 19363, -1,
19364, 19363, 19074, -1,
19074, 19075, 19364, -1,
19365, 19364, 19075, -1,
19075, 19076, 19365, -1,
19366, 19365, 19076, -1,
19076, 19077, 19366, -1,
19367, 19366, 19077, -1,
19077, 19078, 19367, -1,
19368, 19367, 19078, -1,
19078, 19079, 19368, -1,
19369, 19368, 19079, -1,
19079, 19080, 19369, -1,
19370, 19369, 19080, -1,
19080, 19081, 19370, -1,
19371, 19370, 19081, -1,
19081, 19082, 19371, -1,
19372, 19371, 19082, -1,
19082, 19083, 19372, -1,
19373, 19372, 19083, -1,
19083, 19084, 19373, -1,
19374, 19373, 19084, -1,
19084, 19085, 19374, -1,
19375, 19374, 19085, -1,
19085, 19086, 19375, -1,
19376, 19375, 19086, -1,
19086, 19087, 19376, -1,
19377, 19376, 19087, -1,
19087, 19088, 19377, -1,
19378, 19377, 19088, -1,
19088, 19089, 19378, -1,
19379, 19378, 19089, -1,
19089, 19090, 19379, -1,
19380, 19379, 19090, -1,
19090, 19091, 19380, -1,

19381, 19380, 19091, -1,
19091, 19092, 19381, -1,
19382, 19381, 19092, -1,
19092, 19093, 19382, -1,
19383, 19382, 19093, -1,
19093, 19094, 19383, -1,
19384, 19383, 19094, -1,
19094, 19095, 19384, -1,
19385, 19384, 19095, -1,
19095, 19096, 19385, -1,
19386, 19385, 19096, -1,
19096, 19097, 19386, -1,
19387, 19386, 19097, -1,
19097, 19098, 19387, -1,
19388, 19387, 19098, -1,
19098, 19099, 19388, -1,
19389, 19388, 19099, -1,
19099, 19100, 19389, -1,
19390, 19389, 19100, -1,
19391, 19390, 19100, -1,
19100, 19101, 19391, -1,
19392, 19391, 19101, -1,
19101, 19102, 19392, -1,
19393, 19392, 19102, -1,
19102, 19103, 19393, -1,
19394, 19393, 19103, -1,
19103, 19104, 19394, -1,
19104, 19105, 19394, -1,
19395, 19394, 19105, -1,
19105, 19106, 19395, -1,
19396, 19395, 19106, -1,
19106, 19107, 19396, -1,
19107, 19108, 19396, -1,
19108, 19109, 19396, -1,
19397, 19396, 19109, -1,
19109, 19110, 19397, -1,
19110, 19111, 19397, -1,
19111, 19112, 19397, -1,
19398, 19397, 19112, -1,
19399, 19398, 19112, -1,
19112, 19113, 19399, -1,
19400, 19399, 19113, -1,
19113, 19114, 19400, -1,
19401, 19400, 19114, -1,
19114, 19115, 19401, -1,
19402, 19401, 19115, -1,
19115, 19116, 19402, -1,
19403, 19402, 19116, -1,
19116, 19117, 19403, -1,
19404, 19403, 19117, -1,
19117, 19118, 19404, -1,
19405, 19404, 19118, -1,
19118, 19119, 19405, -1,
19406, 19405, 19119, -1,
19119, 19120, 19406, -1,

101530, 101555, 101521, -1,
101530, 101520, 101561, -1,
101519, 101529, 101561, -1,
101519, 101561, 101531, -1,
101519, 101531, 101518, -1,
101531, 101561, 101520, -1,
101486, 101523, 101487, -1,
101487, 101562, 101488, -1,
101488, 101562, 101490, -1,
101551, 101562, 101554, -1,
101554, 101562, 101523, -1,
101487, 101523, 101562, -1,
101551, 101490, 101562, -1,
45078, 101476, 66032, -1,
101477, 101476, 101486, -1,
101502, 101563, 45078, -1,
101505, 101564, 101502, -1,
101512, 101564, 101505, -1,
101523, 101486, 101565, -1,
101566, 101486, 101476, -1,
101476, 45078, 101563, -1,
101563, 101502, 101564, -1,
101565, 101486, 101566, -1,
101564, 101512, 101565, -1,
101512, 101523, 101565, -1,
101566, 101476, 101563, -1,
101566, 101563, 101564, -1,
101566, 101564, 101565, -1,
66032, 101476, 66039, -1,
66063, 101495, 66064, -1,
66064, 66071, 66044, -1,
101478, 101495, 66063, -1,
66071, 101567, 101513, -1,
101513, 101568, 101533, -1,
101536, 101568, 101539, -1,
101542, 101569, 101545, -1,
101545, 101496, 101548, -1,
101548, 101496, 101551, -1,
66071, 66064, 101570, -1,
101496, 101545, 101569, -1,
101567, 66071, 101570, -1,
101542, 101539, 101569, -1,
101568, 101513, 101567, -1,
101495, 101570, 66064, -1,
101496, 101494, 101492, -1,
101536, 101533, 101568, -1,
101568, 101569, 101539, -1,
101495, 101494, 101571, -1,
101495, 101571, 101570, -1,
101571, 101494, 101496, -1,
101571, 101496, 101569, -1,
101571, 101569, 101567, -1,
101571, 101567, 101570, -1,
101569, 101568, 101567, -1,
101490, 101551, 101496, -1,

67376, 67383, 67375, -1,
67380, 101480, 67383, -1,
67375, 67383, 101480, -1]

]
]
]]
End of file

6451

nichola feldman-kiss

273 stewart street
ottawa ontario
canada k1n 6k3

613 789 4432
edgecity@magma.ca

©nichola feldman-kiss 2006