

009-04-27,14:25:00,2009-05-01,17:12:00,2009-03-09,11:49:00,2009-06-24,17:46:00,2009-06-02,10:21:00,2009-06-17,19:50:00,2009-06-09,14:42:00,2009-06-18,10:40:00,2009-06-14,14:26:00,2009-04-27,17:02:00,2009-05-01,17:12:00,2009-01-01,00:00:00,2009-06-10,10:19:00,2009-06-19,12:49:00,2009-06-13,13:35:00,2009-06-13,12:54:00,2009-02,16:44:00,2009-06-18,16:17:00,2009-04-27,18:44:00,2009-03-09,18:02:00,2009-06-16,18:46:00,2009-06-02,19:33:00,2009-06-18,15:52:00,2009-06-12,13:18:00,2009-06-13,17:44:00,2009-06-24,17:19:00,2009-06-24,12:09:00,2009-03-26,10:26:00,2009-06-08,18:13:00,2009-06-10,16:23:00,2009-06-02,13:01:00,2009-06-06,17:07:00,2009-06-22,13:17:00,2009-06-13,10:33:00,2009-06-15,13:19:00,2009-04-15,12:01:00,2009-03-26,10:25:00,2009-06-16,14:40:00,2009-06-24,16:48:00,2009-06-27,17:50:00,2009-06-01,12:37:00,2009-06-10,10:30:00,2009-06-13,12:54:00,2009-06-26,11:05:00,2009-06-18,14:58:00,2009-04-04,11:54:00,2009-06-23,13:52:00,2009-05-27,19:13:00,2009-06-11,12:19:00,2009-06-22,17:32:00,2009-06-18,17:02:00,2009-06-23,19:56:00,2009-06-30,16:21:00,2009-06-03,15:39:00,2009-04-18,15:57:00,2009-06-14,13:16:00,2009-07-01,12:13:00,2009-06-29,10:08:00,2009-06-11,17:04:00,2009-06-11,18:33:00,2009-06-13,12:54:00,2009-06-10,14:34:00,2009-04-16,17:34:00,2009-05-04,15:43:00,2009-06-06,15:04:00,2009-06-26,11:06:00,2009-06-10,16:55:00,2009-02-14,13:57:00,2009-05-16,16:08:00,2009-06-20,12:21:00,2009-06-18,17:26:00,2008-07-13,12:52:00,2009-04-04,11:55:00,2009-05-19,09:39:00,2009-06-19,13:12:00,2009-06-02,12:42:00,2009-06-18,15:03:00,2009-06-11,17:32:00,2009-06-11,16:58:00,2009-06-24,16:30:00,2009-06-20,12:01:00,2009-04-27,20:02:00,2009-06-10,13:30:00,2009-06-10,12:02:00,2009-06-10,13:48:00,2009-06-22,13:19:00,2009-06-13,14:26:00,2009-06-20,14:25:00,2009-05-28,12:13:00,2009-04-27,20:02:00,2009-06-18,10:16:00,2009-06-17,19:27:00,2009-06-06,13:34:00,2009-06-01,12:37:00,2009-06-06,11:22:00,2009-06-06,17:19:00,2009-06-20,15:31:00,2009-04-27,19:54:00,2009-06-11,17:04:00,2009-06-09,17:31:00,2009-06-22,13:09:00,2009-06-18,18:40:00,2009-06-30,14:26:00,2009-06-15,19:57:00,2009-04-10,11:53:00,2009-04-27,19:58:00,2009-06-18,10:16:00,2009-06-16,14:57:00,2009-06-03,15:29:00,2009-06-03,16:08:00,2009-06-20,13:48:00,2009-06-24,17:19:00,2009-06-10,16:07:00,2009-04-27,19:57:00,2009-06-30,14:39:00,2009-06-24,16:49:00,2009-06-08,12:42:00,2009-06-22,13:17:00,2009-06-13,11:07:00,2009-06-04,17:19:00,2009-06-20,17:11:00,2009-04-27,20:01:00,2009-05-16,15:41:00,2009-06-17,14:01:00,2009-06-22,14:24:00,2009-06-23,18:20:00,2009-06-22,13:18:00,2009-06-13,13:37:00,2009-06-09,16:14:00,2009-06-14,13:11:00,2009-04-27,13:10:00,2009-06-29,15:36:00,2009-05-01,17:39:00,2009-06-04,10:32:00,2009-06-18,19:06:00,2009-06-11,17:31:00,2009-06-22,15:26:00,2009-06-11,12:11:00,2009-06-18,18:26:00,2009-04-27,19:51:00,2009-06-13,12:26:00,2009-06-28,16:26:00,2009-06-27,12:18:00,2009-06-08,13:13:00,2009-06-14,13:12:00,2009-06-14,10:18:00,2009-06-16,19:30:00,2009-06-20,13:20:00,2009-03-20,13:51:00,2009-06-21,13:05:00,2009-06-04,16:48:00,2009-06-11,12:35:00,2009-06-09,18:19:00,2009-06-15,13:02:00,2009-06-12,13:54:00,2009-06-18,15:01:00,2009-06-19,10:56:00,2009-04-27,18:44:00,2009-05-30,10:59:00,2009-06-30,16:50:00,2009-06-27,11:01:00,2009-05-21,15:38:00,2009-06-11,15:32:00,2009-06-11,17:54:00,2009-06-20,17:27:00,2009-07-01,08:53:00,2009-04-27,12:51:00,2009-06-18,16:11:00,2009-06-24,16:49:00,2009-06-22,17:33:00,2009-05-29,13:32:00,2009-06-22,13:17:00,2009-06-22,16:57:00,2009-06-04,13:09:00,2009-06-07,17:26:00,2009-04-27,18:44:00,2009-06-15,19:20:00,2009-06-17,18:09:00,2009-06-16,18:03:00,2009-06-18,15:03:00,2009-06-18,15:59:00,2009-06-04,11:31:00,2009-06-08,13:58:00,2009-06-08,16:37:00,2009-04-27,19:51:00,2009-06-30,15:54:00,2009-05-08,12:51:00,2009-06-26,15:24:00,2009-06-12,12:13:00,2009-06-12,15:04:00,2009-06-03,13:14:00,2009-06-20,15:11:00,2009-06-23,13:51:00,2009-04-27,19:00:00,2009-06-17,11:25:00,2009-06-16,16:51:00,2009-05-27,19:26:00,2009-06-22,11:17:00,2009-06-06,12:02:00,2009-06-16,16:36:00,2009-06-30,16:21:00,2009-06-16,15:27:00,2009-04-26,15:44:00,2009-06-13,13:31:00,2008-07-26,15:11:00,2009-06-01,09:00:00,2009-06-04,16:14:00,2009-06-07,16:57:00,2009-06-12,13:54:00,2009-06-23,15:10:00,2009-06-29,13:51:00,2009-04-27,19:11:00,2009-06-13,18:10:00,2009-05-06,12:41:00,2009-05-24,19:21:00,2009-06-06,11:54:00,2009-05-20,15:47:00,2009-05-18,12:47:00,2009-06-13,13:25:00,2009-06-20,18:46:00,2009-04-27,14:18:00,2009-06-03,15:59:00,2009-06-26,15:47:00,2009-06-22,13:46:00,2009-06-12,13:41:00,2009-06-22,18:27:00,2009-06-08,13:52:00,2009-06-20,16:35:00,2009-06-13,15:28:00,2009-04-27,17:30:00,2009-06-16,11:34:00,2009-06-09,18:30:00,2009-06-01,00:00:00,2009-06-25,18:51:00,2004-10-14,00:00:00,2009-06-22,14:10:00,2009-06-11,12:55:00,2009-06-08,17:33:00,2009-04-27,17:46:00,2009-06-16,11:33:00,2009-06-25,17:24:00,2009-06-10,10:21:00,2009-06-17,11:33:00,2009-06-18,16:46:00,2009-06-10,13:48:00,2009-06-31,14:02:00,2009-06-16,10:33:00,2009-04-27,19:57:00,2009-06-16,19:19:00,2009-06-06,16:38:00,2009-05-15,11:45:00,2009-06-16,18:03:00,1970-01-01,00:00:00,2009-06-26,17:00:00,2009-05-19,16:18:00,2009-06-03,17:32:00,2009-04-27,20:02:00,2009-06-16,11:33:00,2007-08-28,18:55:00,2009-07-01,11:52:00,2009-06-26,10:50:00,2009-06-22,13:19:00,2009-06-13,16:23:00,2009-05-22,14:44:00,2009-06-28,12:30:00,2009-05-04,15:57:00,2009-06-16,11:34:00,2009-06-01,12:25:00,2009-06-08,17:22:00,2009-05-29,14:38:00,2009-06-07,16:56:00,2009-06-18,15:40:00,2009-06-02,19:53:00,2009-06-11,11:41:00,2009-05-04,20:00:00,2009-06-11,16:34:00,2009-06-16,16:50:00,2009-06-17,19:15:00,2009-06-19,11:31:00,2009-06-06,13:47:00,2009-06-12,13:54:00,2009-06-12,17:39:00,2009-06-06,15:26:00,2009-03-26,10:26:00,2009-06-11,15:22:00,2009-06-10,16:23:00,2009-06-04,10:27:00,2009-03-14,13:40:00,2009-06-22,13:19:00,2009-06-13,14:26:00,2009-06-16,14:28:00,2009-04-08,14:18:00

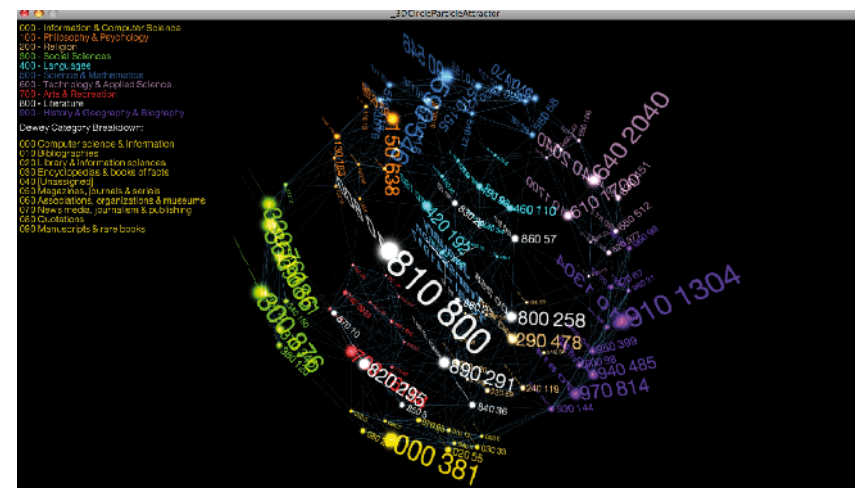
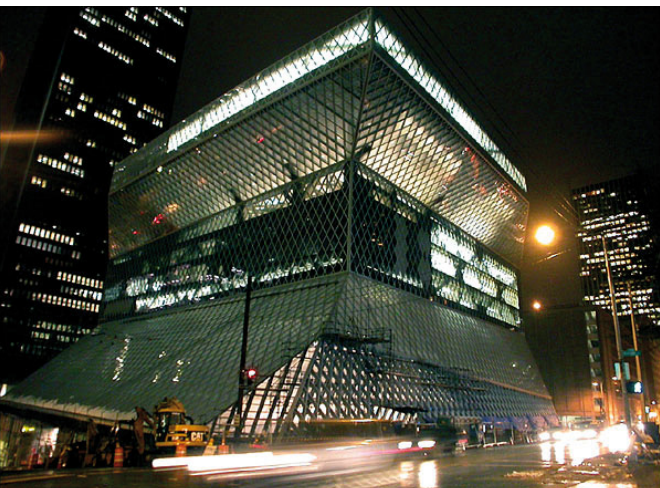
Workshop Data Visualisation - G. Legrady

Stanislas Bernatt
Master Media Design
2ème Année HEAD - Genève

2009-04-27,19:57:00,2009-06-23,14:07:00,2009-05-22,14:53:00,2009-06-08,13:55:00,2009-06-25,10:13:00,2009-06-20,18:00:00,2009-06-25,11:00:00,2009-06-24,17:08:00,2009-06-25,15:16:00,2009-01-16,11:34:00,2009-06-19,15:28:00,2009-06-20,17:39:00,1970-01-01,00:00:00,2009-04-23,13:49:00,2009-06-16,13:20:00,2009-06-19,16:00:00,2009-06-17,16:41:00,2009-06-15,15:40:00,2009-06-16,16:57:00,2009-06-26,18:21:00,2009-06-03,11:11:00,2009-06-01,17:31:00,2009-06-17,12:25:00,2009-06-16,16:24:00,2009-06-16,14:15:00,2009-04-27,17:30:00,2009-06-17,17:09:00,2007-11-16,15:08:00,2009-06-22,16:36:00,2009-06-14,11:43:00,2008-07-16,19:20:00,2009-01-10,16:46:00,2009-06-25,10:59:00,2009-04-27,18:45:00,2009-06-16,13:03:00,2009-04-15,15:47:00,2009-06-04,10:26:00,2009-06-09,18:28:00,2009-06-11,12:27:00,2009-06-14,12:22:00,2009-06-05,14:24:00,2009-03-03,16:57:00,2009-06-10,17:16:00,2009-03-30,16:00:00,2009-06-03,17:12:00,2009-06-25,11:53:00,2009-06-14,14:35:00,2009-06-16,13:20:00,2009-06-18,18:08:00,2009-04-04,11:55:00,2009-04-21,16:28:00,2009-04-04,10:56:00,2009-06-22,18:11:00,2009-05-18,16:25:00,2009-06-24,15:07:00,2009-06-16,15:05:00,2009-06-19,14:41:00,2009-04-27,18:44:00,2009-06-14,13:48:00,2008-11-26,14:22:00,2009-06-19,15:10:00,2009-06-18,16:41:00,2009-06-20,14:26:00,2009-06-23,16:38:00,2009-06-16,15:18:00,2009-06-26,14:38:00,2009-04-15,17:43:00,2009-05-01,17:12:00,2009-06-30,17:54:00,2009-06-04,10:27:00,2009-03-14,13:40:00,2009-06-22,13:19:00,2009-06-13,14:26:00,2009-06-16,14:28:00,2009-04-08,14:18:00

Sujet :

Avec les données de la bibliothèque de Seattle (Washington, USA) je devais réaliser un concept pour visualiser ses données sous des formes graphiques. La visualisation des données de cette bibliothèque permet de savoir quels livres entre et sort. Pour trouver mon concept je me suis inspiré des travaux réalisés de Reza Ali et aussi ceux de G. Legrady.



Le concept :

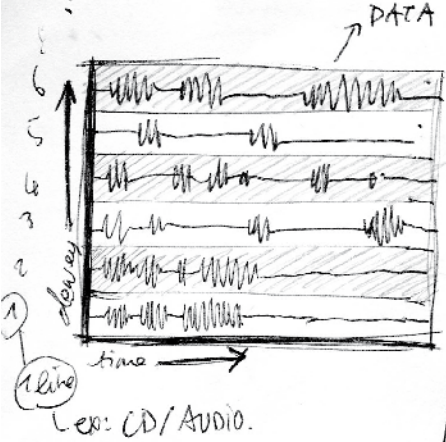
Comme l'installation sera dans cette bibliothèque, j'ai pensé d'apporter la manière d'ouvrir un livre à la visualisation des données. C'est à dire que les gens pourront voir l'animation des graphiques qui bougent comme des pages de livres. Si possible, avec des écrans tactiles, le client pourra toucher et tourner les diagrammes comme s'il feuilletait un livre. Chaque diagramme représentera une classification des livres (ex: Littérature / Arts / Science/ etc.)

J'ai intitulé ce concept " diagram book " parce que sa forme est proche aux pages d'un livre.

Ces pages de données seront posées verticalement sur les 31 cercles et chaque cercle correspond à une journée du mois. Le premier jour du mois partira du centre et finira au 31ème cercle. Les données représentées dans ce workshop sont du mois de Juillet 2009.

Recherches / Croquis

Croquis/Sketches



THINK FOR A STORY / CONCEPT

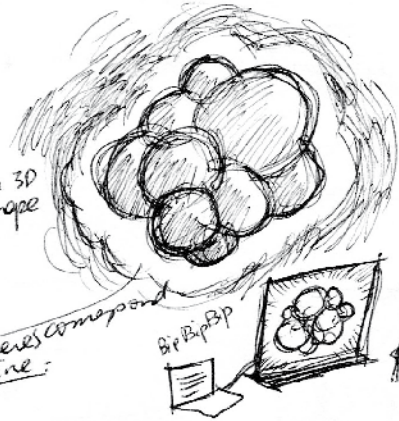
DATA Δ Component of "data" (quantity) via the presence??

All the data is represented as a "heart beat line". The data informations got his heart beats, the public is watching something alive so they get familiar to it.

THE HEART OF THE LIBRARY

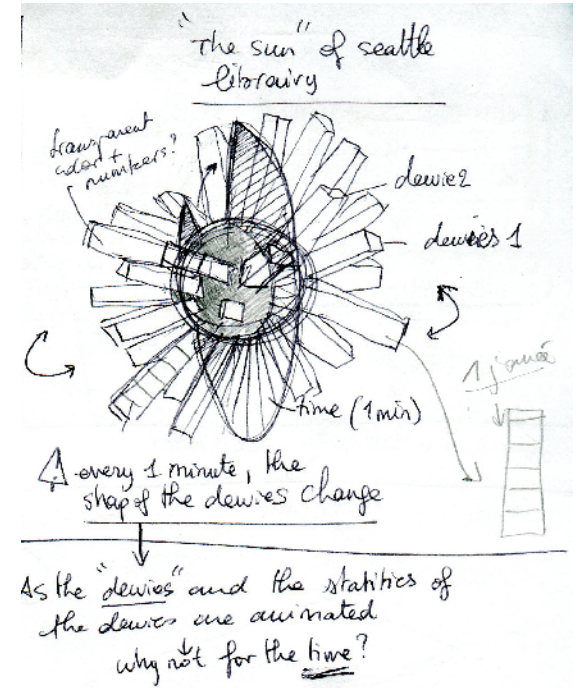
linked to a 3D shape

each spheres correspond to a line.

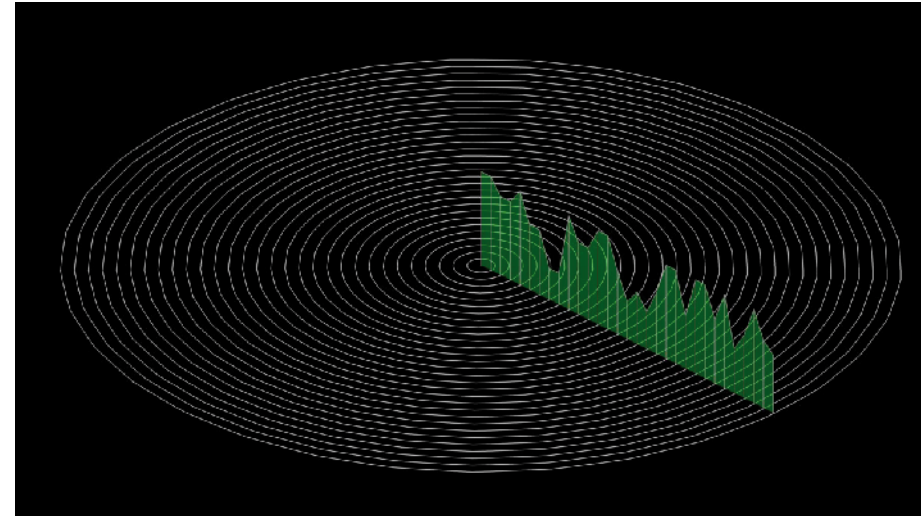
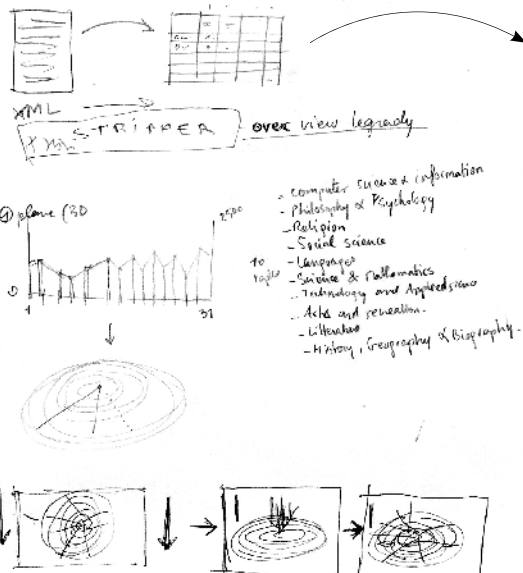
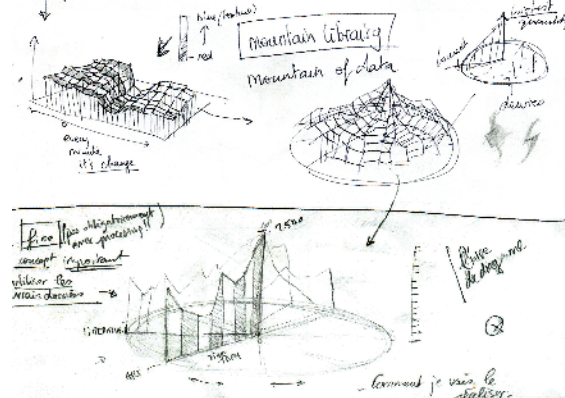


change the shape with the keyboard.

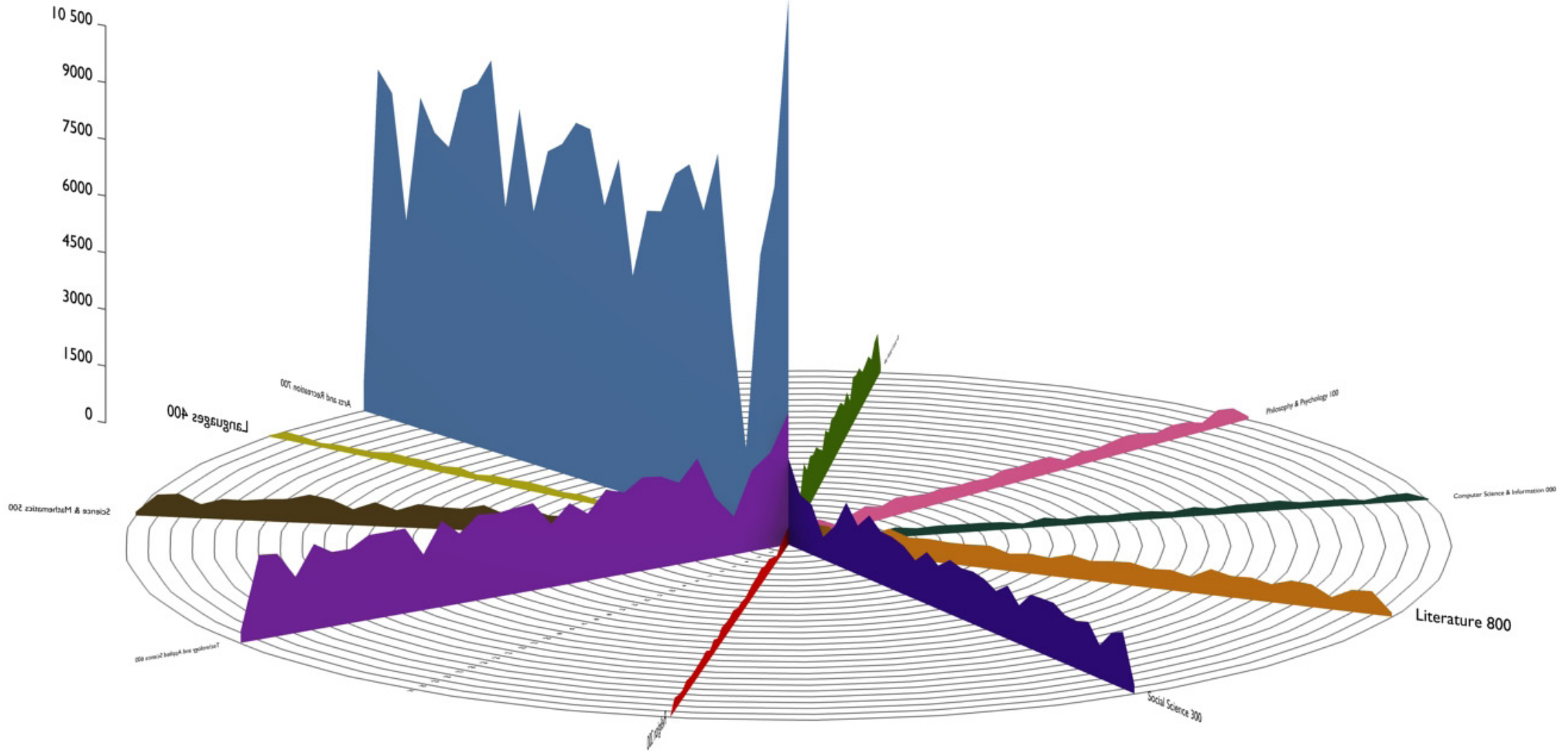
Processing files in Lab 1.07 - week 1 demos.



landscape creator with the points of the data which create the shapes of it.



Aperçus



Science & Mathematics 500

Languages 400

Technology and Applied Science 600

Arts and Recreation 700

History, Geography & Biography 900

Philosophy & Psychology 100

Social Science 300

Literature 800

Computer Science & Information 000

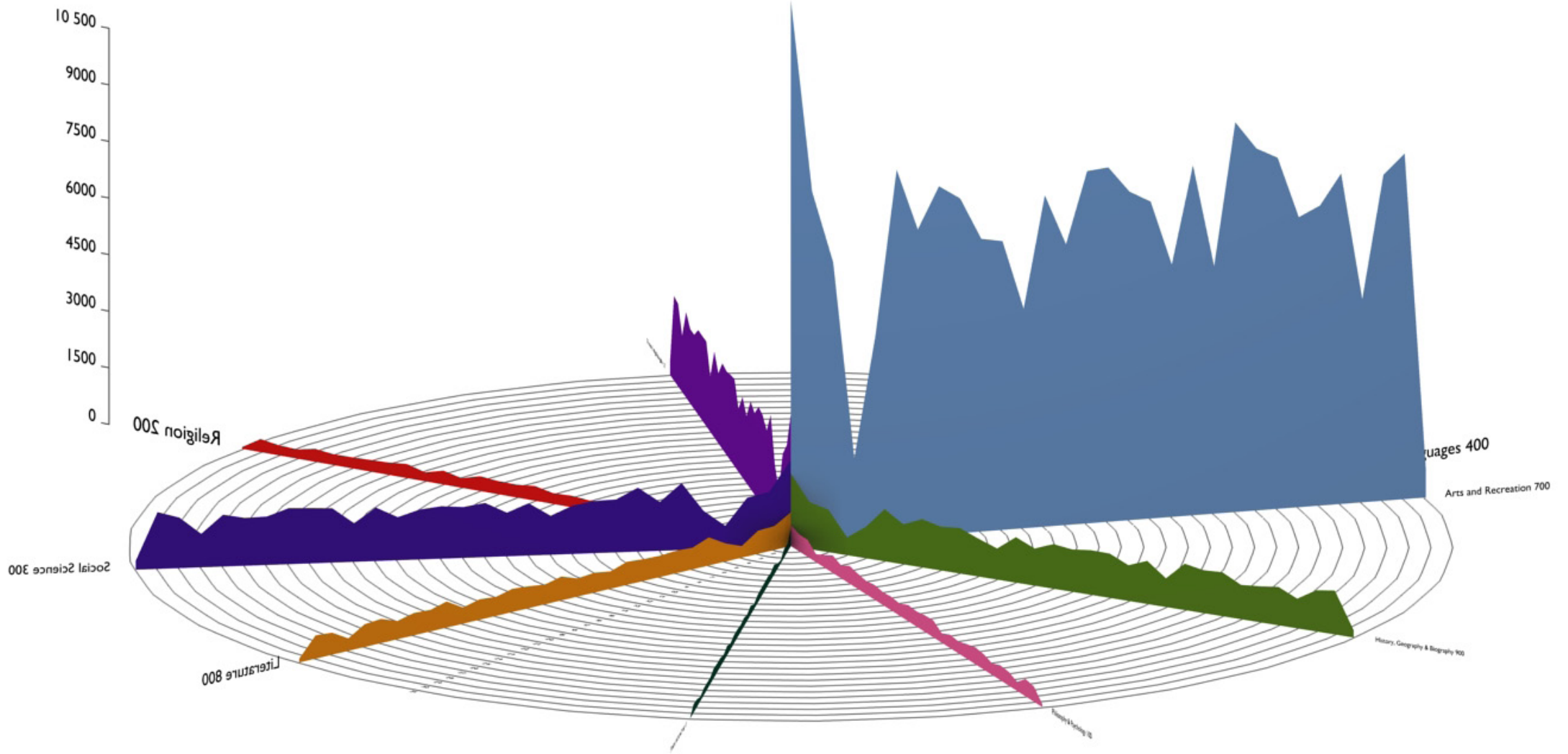
Philosophy & Psychology 100

Arts and Recreation 700

Languages 400

Science & Mathematics 500

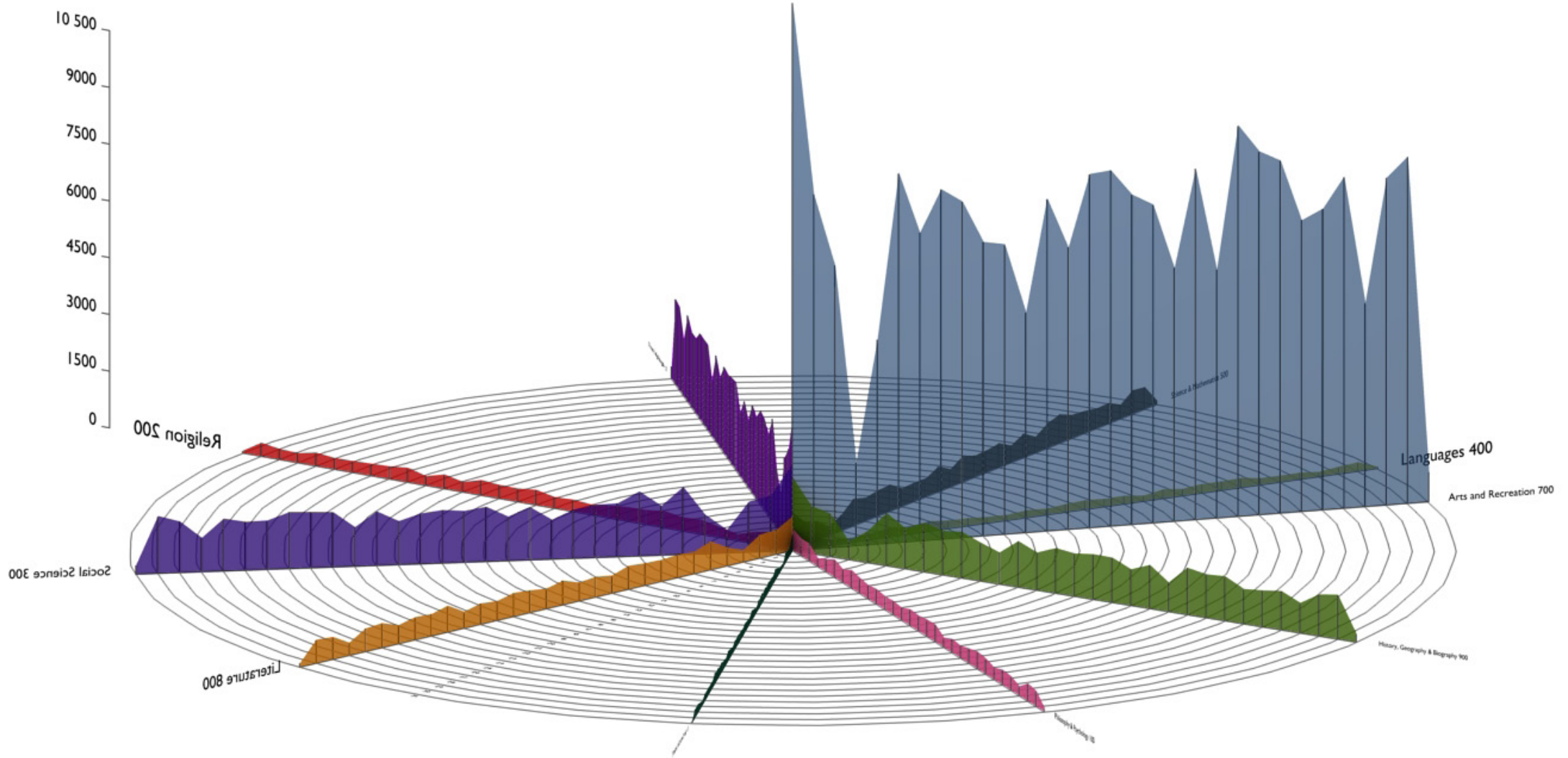
Technology and Applied Science 600

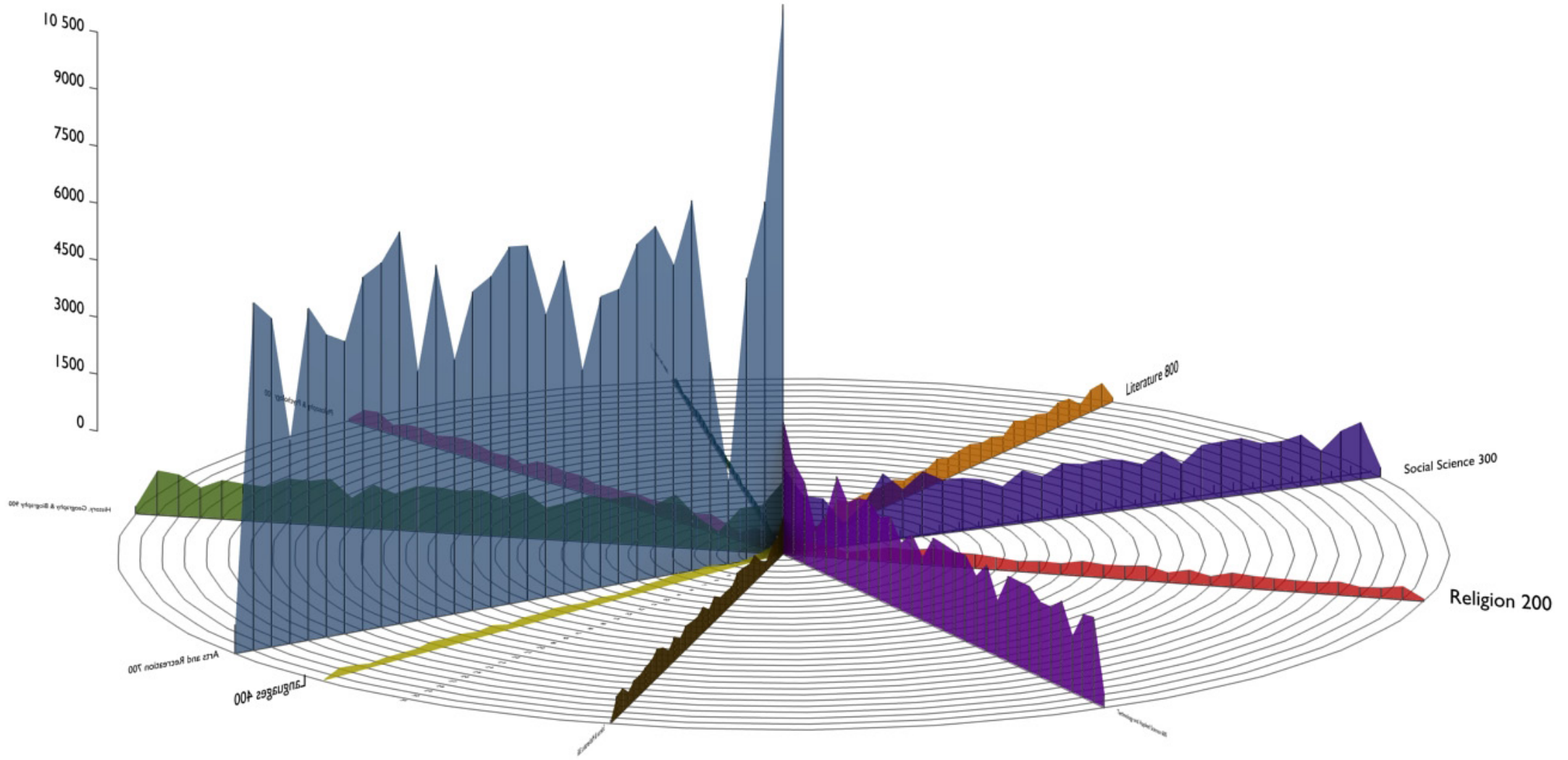


Computer Science & Information 000
 Litterature 800

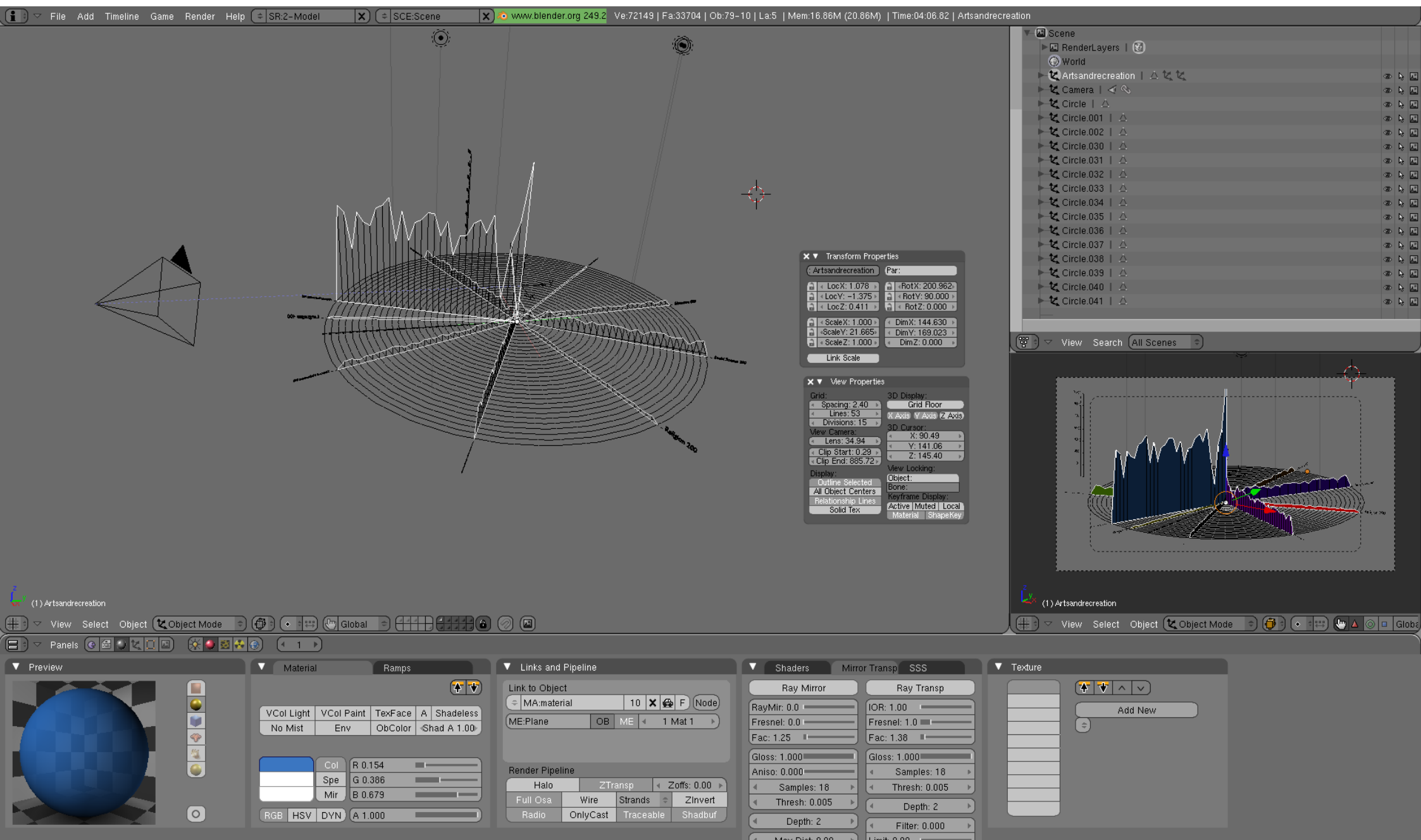
Social Science 300
 Religion 200

Aperçus avec de la transparence





Logiciel utilisé pour le graphisme : Blender 3D.



Thanks for your attention.