

Blade Runner SPL Research Report

Jieliang Luo, George Legrady
Winter 2018

This report serves as an example to demonstrate how to explore a specific item, like a movie or book, in the Seattle Public Library(SPL) database. The subject explored in this report is the movie *Blade Runner*. The first step is to get general statistical information on the subject by looking it up at the spl.org site to 1) get info as to what is in the collection by typing the title in the search window, and 2) to see what other items or titles are correlated.

At <https://seattle.bibliocommons.com/> type in “Blade Runner” in the search box. There are 30 items returned. *Blade Runner* (dvd 2007) has a callNumber of “DVD BLADE R”; the 2010 version has the same callNumber; the audio book has EAUDIO sci-fic DICK 2007; skip *Blade Runner* by K.W. Jeter and any others as this is not the item we are looking for, but further down you will find “*Do Androids Dream of Electric Sheep?*” by Philip K. Dick, SCI-FIC DICK 2017, and this should be tracked as it's the book that the movie is based on.

Once we have this preliminary information we can then proceed to the MySQL database. The first step is to get an idea of how many versions of the topic are in the SPL database, in what media types, and the circulation summary of each version.

The MySQL query:

```
SELECT
  bibNumber, itemType, COUNT(bibNumber) AS Counts
FROM
  spl_2016.inraw
WHERE
  title = 'Blade Runner'
GROUP BY bibNumber , itemType
ORDER BY Counts DESC
```

gives an overall count of each version of the topic:

bibNumber	itemType	title	Counts
2479267	acdvd	Blade runner	4184
2132112	acdvd	Blade runner	883
1943806	acvhs	Blade runner	101
3284034	acdvd	Blade runner	68

As shown above in the “itemtype” column, SPL has four different versions of *Blade Runner*, three of them are DVDs (acdvd) and one is a videotape (acvhs). The bibNumber ‘2479267’ has an outstanding checkout numbers in comparison of other bibNumbers.

Since each bibNumber consists of many copies, I’m curious to see how many copies each bibNumber has. I checked at two datasets in SPL: 1) inraw which shows check-in records, and 2) outraw which shows check-out records:

	From Check-in Dataset	From Check-out Dataset
3284034	18 copies	22 copies
2479267	48 copies	48 copies
2132112	15 copies	15 copies
1943806	4 copies	4 copies

An interesting point is that bibNumber 3284034 has four more copies in checkouts than in checkins, which means those four items have not been returned after their first checkouts. So I looked specifically into the four individual items to get more information by the MySQL query:

```
SELECT
*
FROM
spl_2016.outraw
WHERE
itemNumber = '6346423' or itemNumber = '6346424' or itemNumber = '6346425' or itemNumber =
'6346426'
```

The data showed that they were all checked out very recently, so I assumed that those four items were new purchases or possibly the library updated the bibNumber from a previous bibNumber.

id	itemNumber	bibNumber	cout	cin	collcode	itemtype	barcode	title	callNumber
86551766	6346423	3284034	2017-10-25 17:37:00	NULL	nadvd	acdvd	0010091763945	Blade runner	DVD BLADE R
86552579	6346424	3284034	2017-10-25 17:59:00	NULL	nadvd	acdvd	0010091763952	Blade runner	DVD BLADE R
86562902	6346425	3284034	2017-10-26 15:12:00	NULL	nadvd	acdvd	0010091763960	Blade runner	DVD BLADE R
86544774	6346426	3284034	2017-10-25 14:50:00	NULL	nadvd	acdvd	0010091763978	Blade runner	DVD BLADE R

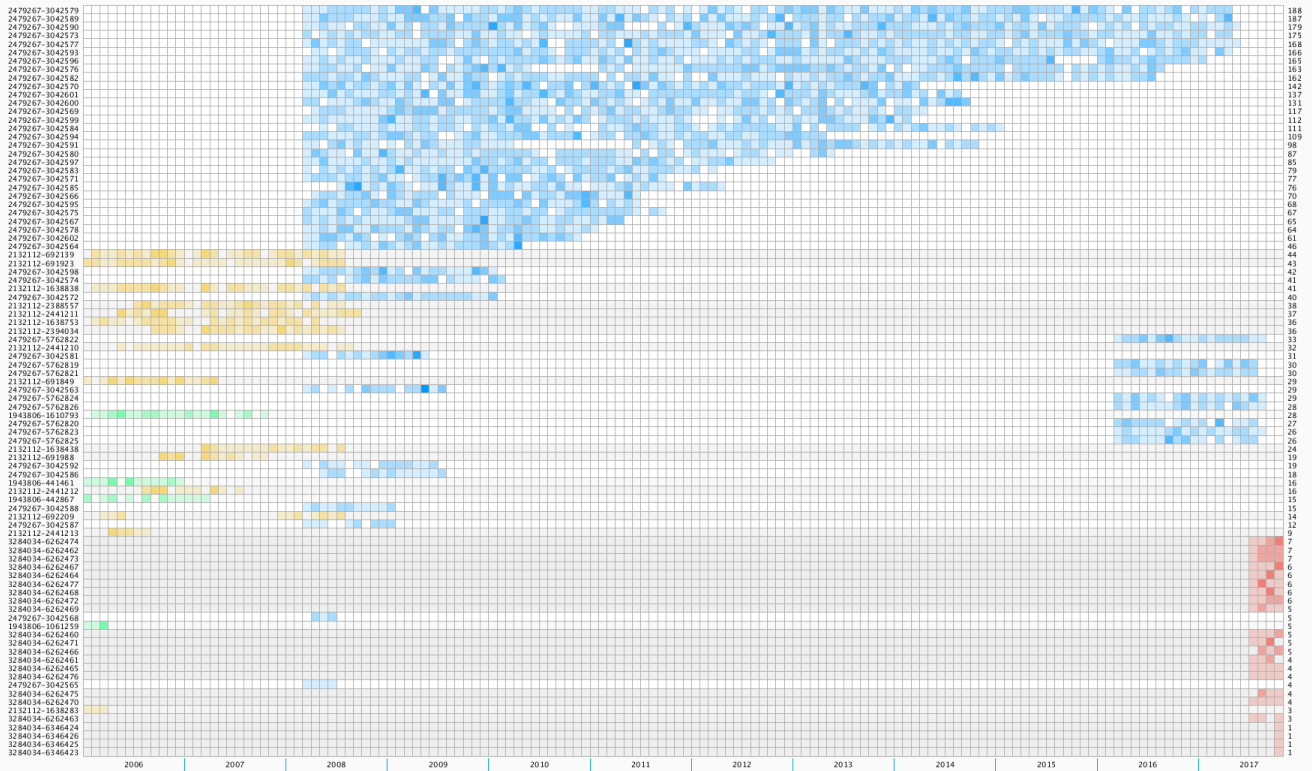
This led me to look into the monthly performance of each individual item of *Blade Runner* from 2006 to 2017 as I was sure that many details and interesting patterns may be revealed. I made two visualizations based on the data. I assigned unique colors to each different bibNumbers. BibNumbers and itemNumbers are listed on the left in case viewers want to explore them on more detail, and the total checkouts are placed on the right. Each item that enters the library collection gets an itemNumber at the time of registration. This is an incremental number which can give an idea of when an item was acquired.

Blade Runner Monthly Performance from 2006 to 2017



Vertically ordered by bibNumber sequence

Blade Runner Monthly Performance from 2006 to 2017



Vertically ordered by total checkouts

Some patterns we can find from the two visualizations: 1) the red squares on the lower right corner are recently purchased or updated from other bibNumbers. 2) some blue squares haven't been checked out until May 2016, while other blue squares became inactive after 2009. It might be interesting to look into the details of those blue squares. 3) the yellow squares became inactive after June 2008, which is the time when the blue squares became active. They might have some correlations. 4) the green squares (video tape) became inactive after April 2007, mainly because the videotape medium has become obsolete over time.

As you can see, the two visualizations are very informative. Besides the above mentioned patterns, there are other interesting points that deserve further explorations.

I'm curious about the correlation between the movie *Blade Runner*, the book *Do Androids Dream of Electric Sheep* on which the movie script was adapted and also other books having *Blade Runner* in their titles.

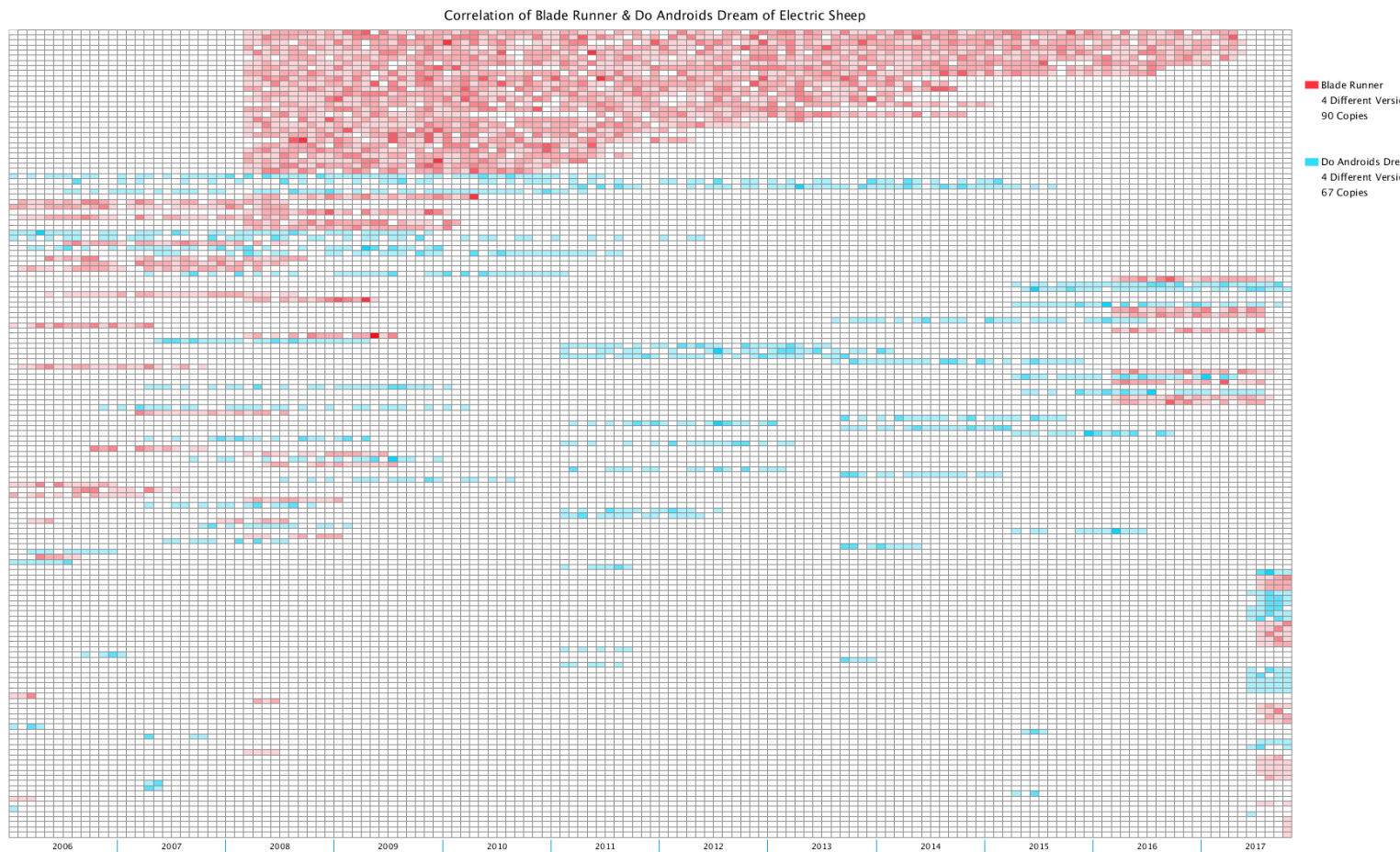
Reviewing the results of the MySQL query:

```
SELECT
  bibNumber, itemType, title, COUNT(bibNumber) AS Counts
FROM
  spl_2016.inraw
WHERE
  title LIKE '%Blade Runner%'
GROUP BY bibNumber , itemType, title
ORDER BY Counts DESC
```

I found *Do Androids Dream of Electric Sheep* has four different versions that out of which three are books were published in different years, and one is an audio tape. The one published in 1996 has a very high checkouts.

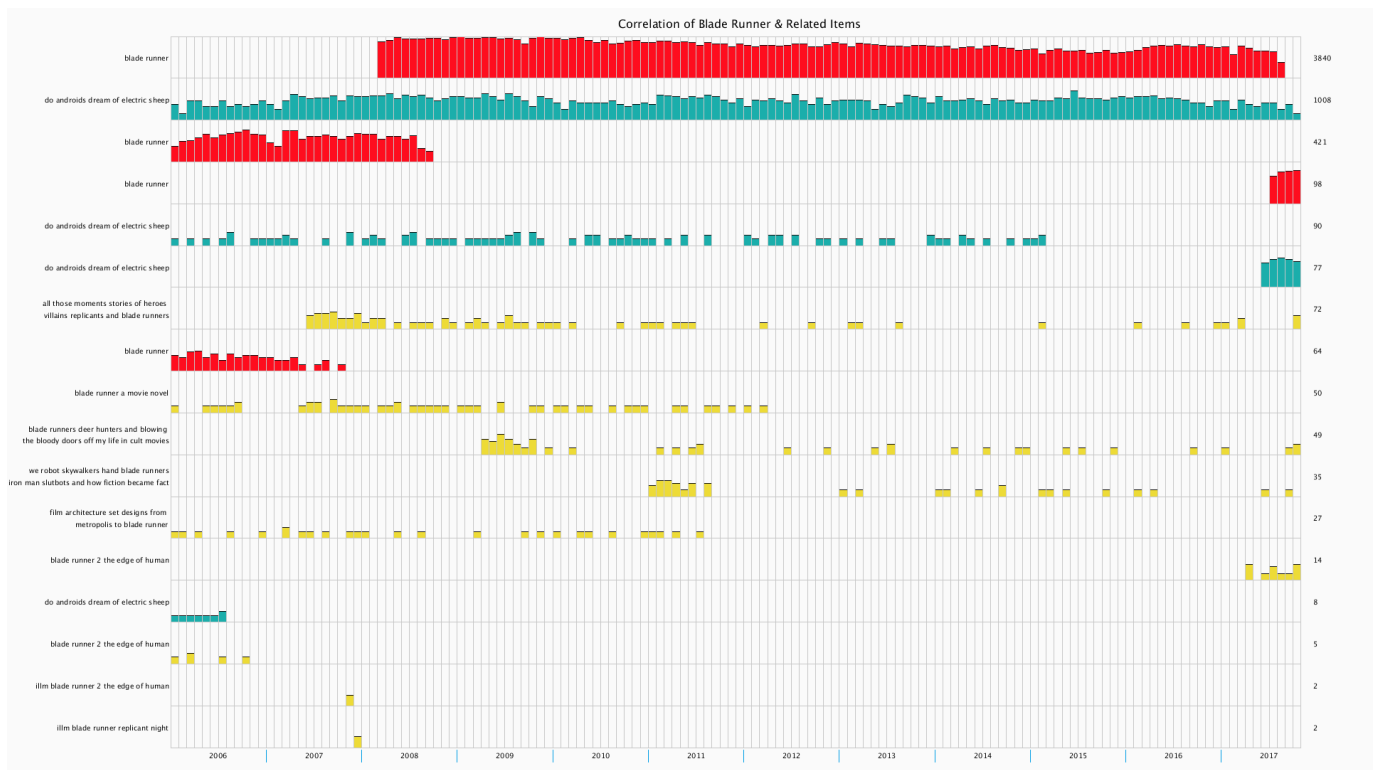
bibNumber	itemType	title	callNumber	Counts
2479267	acdvd	Blade runner	DVD BLADE R	3840
1663859	acbk	Do androids dream of electric sheep	SCI-FIC DICK 1996	1008
2132112	acdvd	Blade runner	DVD BLADE R	272
2132112	acdvd	Blade runner	DVD BLADE_R	149
3284034	acdvd	Blade runner	DVD BLADE R	98
2071710	acbk	Do androids dream of electric sheep	SCI-FIC DICK	90
3278094	acbk	Do androids dream of electric sheep	SCI-FIC DICK 2017	78
2431837	acbk	All those moments stories of heroes villains repli...	791.43028 H2921H...	72
1943806	acvhs	Blade runner	VHS BLADE R	64
2567910	acbk	Blade runners deer hunters and blowing the blo...	791.43023 D3606D...	49
125916	acbk	Blade runner a movie novel	FIC BURROUG	49
2693064	acbk	We robot Skywalkers hand blade runners Iron...	791.43656 M4619W...	35
2041778	acbk	Film architecture set designs from Metropolis to...	791.43025 F4871 1999	27
3265044	acbk	Blade runner 2 The edge of human	SCI-FIC JETER 1995	14
1375141	accas	Do androids dream of electric sheep	CAS SCI-FIC DICK	8
1611662	acbk	Blade Runner 2 the edge of human	SCI-FIC JETER 1995	5
2469826	dcillb	ILLM Blade Runner replicant night	ILL	2
2465792	dcillb	ILLM Blade Runner 2 the edge of human	ILL	2
125916	acbk	Blade runner a movie novel	SCI-FIC BURROUG	1

Then I explored the correlation between *Blade Runner* and *Do Androids Dream of Electric Sheep* with the MySQL Query in Appendix I to show each individual copy's monthly performance.



This also reveals interesting information. The most distinguishing is that both the movie and the book have active copies after May 2017, as shown on the right end of the graph, my guess is because of the announcement at that time for the upcoming release.

I also looked into the correlation between *Blade Runner*, *Do Androids Dream of Electric Sheep*, and other items' title consisting that include *Blade Runner*.



Another interesting part is to see the checkout time in a day of each item. A general information is shown below:

bibNumber	title	Counts	8am	9am	10am	11am	12pm	1pm	2pm	3pm	4pm	5pm	6pm	7pm	8pm
2479267	Blade runner	3840	7	9	168	231	311	471	531	511	527	570	247	252	4
1663859	Do androids	1008	1	1	38	54	89	121	125	127	159	154	70	69	0
2132112	Blade runner	421	1	0	17	14	29	47	43	53	52	89	36	39	1
3284034	Blade runner	98	0	0	4	7	6	13	20	13	15	10	6	4	0
2071710	Do androids	90	0	0	2	5	4	10	6	13	12	19	8	10	1
3278094	Do androids	77	0	0	4	5	10	8	7	8	11	9	8	7	0
2431837	All those mo	72	0	0	4	5	4	9	12	7	5	11	5	10	0
1943806	Blade runner	64	0	0	2	4	8	2	9	9	11	8	3	8	0
125916	Blade runner	50	0	0	6	1	1	10	3	3	9	7	5	5	0
2567910	Blade runner	49	0	0	2	3	6	8	8	6	2	7	5	2	0
2693064	We robot Sk	35	0	0	2	2	4	3	1	3	7	6	5	2	0
2041778	Film architec	27	0	0	0	0	2	3	3	4	3	4	4	4	0
3265044	Blade runner	14	0	0	1	1	2	1	2	2	2	1	1	1	0
1375141	Do androids	8	0	0	1	0	1	2	1	0	0	1	0	2	0
1611662	Blade Runne	5	0	0	0	0	0	1	1	3	0	0	0	0	0
2469826	ILLM Blade R	2	0	0	0	0	0	1	0	0	0	0	1	0	0
2465792	ILLM Blade R	2	1	0	0	0	0	0	1	0	0	0	0	0	0

Your work for this MySQL query assignment is to proceed as demonstrated by this report. The assignment is due on Jan 23rd, 2018 at which time each of you will present your report to the class. The report is to be done as a pdf that includes MySQL queries, and screen shots to document your investigation. Hopefully, this report gives an idea of how to approach the first assignment.

Appendix I

```
SELECT
  bibNumber, title, callNumber,
  COUNT(bibNumber) AS Counts,
  SUM(CASE
    WHEN (YEAR(cout) = 2006 and month(cout) = 1) THEN 1
    ELSE 0
  END) AS '2006-1',
  SUM(CASE
    WHEN (YEAR(cout) = 2006 and month(cout) = 2) THEN 1
    ELSE 0
  END) AS '2006-2',
  SUM(CASE
    WHEN (YEAR(cout) = 2006 and month(cout) = 3) THEN 1
    ELSE 0
  END) AS '2006-3',
  SUM(CASE
    WHEN (YEAR(cout) = 2006 and month(cout) = 4) THEN 1
    ELSE 0
  END) AS '2006-4',
  SUM(CASE
    WHEN (YEAR(cout) = 2006 and month(cout) = 5) THEN 1
    ELSE 0
  END) AS '2006-5',
  SUM(CASE
    WHEN (YEAR(cout) = 2006 and month(cout) = 6) THEN 1
    ELSE 0
  END) AS '2006-6',
  SUM(CASE
    WHEN (YEAR(cout) = 2006 and month(cout) = 7) THEN 1
    ELSE 0
  END) AS '2006-7',
  SUM(CASE
    WHEN (YEAR(cout) = 2006 and month(cout) = 8) THEN 1
    ELSE 0
  END) AS '2006-8',
  SUM(CASE
    WHEN (YEAR(cout) = 2006 and month(cout) = 9) THEN 1
    ELSE 0
  END) AS '2006-9',
  SUM(CASE
    WHEN (YEAR(cout) = 2006 and month(cout) = 10) THEN 1
    ELSE 0
  END) AS '2006-10',
  SUM(CASE
    WHEN (YEAR(cout) = 2006 and month(cout) = 11) THEN 1
    ELSE 0
```

```
END) AS '2006-11',
SUM(CASE
  WHEN (YEAR(cout) = 2006 and month(cout) = 12) THEN 1
  ELSE 0
END) AS '2006-12',
SUM(CASE
  WHEN (YEAR(cout) = 2007 and month(cout) = 1) THEN 1
  ELSE 0
END) AS '2007-1',
SUM(CASE
  WHEN (YEAR(cout) = 2007 and month(cout) = 2) THEN 1
  ELSE 0
END) AS '2007-2',
SUM(CASE
  WHEN (YEAR(cout) = 2007 and month(cout) = 3) THEN 1
  ELSE 0
END) AS '2007-3',
SUM(CASE
  WHEN (YEAR(cout) = 2007 and month(cout) = 4) THEN 1
  ELSE 0
END) AS '2007-4',
SUM(CASE
  WHEN (YEAR(cout) = 2007 and month(cout) = 5) THEN 1
  ELSE 0
END) AS '2007-5',
SUM(CASE
  WHEN (YEAR(cout) = 2007 and month(cout) = 6) THEN 1
  ELSE 0
END) AS '2007-6',
SUM(CASE
  WHEN (YEAR(cout) = 2007 and month(cout) = 7) THEN 1
  ELSE 0
END) AS '2007-7',
SUM(CASE
  WHEN (YEAR(cout) = 2007 and month(cout) = 8) THEN 1
  ELSE 0
END) AS '2007-8',
SUM(CASE
  WHEN (YEAR(cout) = 2007 and month(cout) = 9) THEN 1
  ELSE 0
END) AS '2007-9',
SUM(CASE
  WHEN (YEAR(cout) = 2007 and month(cout) = 10) THEN 1
  ELSE 0
END) AS '2007-10',
SUM(CASE
  WHEN (YEAR(cout) = 2007 and month(cout) = 11) THEN 1
  ELSE 0
```



```
END) AS '2007-11',
SUM(CASE
  WHEN (YEAR(cout) = 2007 and month(cout) = 12) THEN 1
  ELSE 0
END) AS '2007-12',
SUM(CASE
  WHEN (YEAR(cout) = 2008 and month(cout) = 1) THEN 1
  ELSE 0
END) AS '2008-1',
SUM(CASE
  WHEN (YEAR(cout) = 2008 and month(cout) = 2) THEN 1
  ELSE 0
END) AS '2008-2',
SUM(CASE
  WHEN (YEAR(cout) = 2008 and month(cout) = 3) THEN 1
  ELSE 0
END) AS '2008-3',
SUM(CASE
  WHEN (YEAR(cout) = 2008 and month(cout) = 4) THEN 1
  ELSE 0
END) AS '2008-4',
SUM(CASE
  WHEN (YEAR(cout) = 2008 and month(cout) = 5) THEN 1
  ELSE 0
END) AS '2008-5',
SUM(CASE
  WHEN (YEAR(cout) = 2008 and month(cout) = 6) THEN 1
  ELSE 0
END) AS '2008-6',
SUM(CASE
  WHEN (YEAR(cout) = 2008 and month(cout) = 7) THEN 1
  ELSE 0
END) AS '2008-7',
SUM(CASE
  WHEN (YEAR(cout) = 2008 and month(cout) = 8) THEN 1
  ELSE 0
END) AS '2008-8',
SUM(CASE
  WHEN (YEAR(cout) = 2008 and month(cout) = 9) THEN 1
  ELSE 0
END) AS '2008-9',
SUM(CASE
  WHEN (YEAR(cout) = 2008 and month(cout) = 10) THEN 1
  ELSE 0
END) AS '2008-10',
SUM(CASE
  WHEN (YEAR(cout) = 2008 and month(cout) = 11) THEN 1
  ELSE 0
```

```
END) AS '2008-11',
SUM(CASE
  WHEN (YEAR(cout) = 2008 and month(cout) = 12) THEN 1
  ELSE 0
END) AS '2008-12',
SUM(CASE
  WHEN (YEAR(cout) = 2009 and month(cout) = 1) THEN 1
  ELSE 0
END) AS '2009-1',
SUM(CASE
  WHEN (YEAR(cout) = 2009 and month(cout) = 2) THEN 1
  ELSE 0
END) AS '2009-2',
SUM(CASE
  WHEN (YEAR(cout) = 2009 and month(cout) = 3) THEN 1
  ELSE 0
END) AS '2009-3',
SUM(CASE
  WHEN (YEAR(cout) = 2009 and month(cout) = 4) THEN 1
  ELSE 0
END) AS '2009-4',
SUM(CASE
  WHEN (YEAR(cout) = 2009 and month(cout) = 5) THEN 1
  ELSE 0
END) AS '2009-5',
SUM(CASE
  WHEN (YEAR(cout) = 2009 and month(cout) = 6) THEN 1
  ELSE 0
END) AS '2009-6',
SUM(CASE
  WHEN (YEAR(cout) = 2009 and month(cout) = 7) THEN 1
  ELSE 0
END) AS '2009-7',
SUM(CASE
  WHEN (YEAR(cout) = 2009 and month(cout) = 8) THEN 1
  ELSE 0
END) AS '2009-8',
SUM(CASE
  WHEN (YEAR(cout) = 2009 and month(cout) = 9) THEN 1
  ELSE 0
END) AS '2009-9',
SUM(CASE
  WHEN (YEAR(cout) = 2009 and month(cout) = 10) THEN 1
  ELSE 0
END) AS '2009-10',
SUM(CASE
  WHEN (YEAR(cout) = 2009 and month(cout) = 11) THEN 1
  ELSE 0
```

```
END) AS '2009-11',
SUM(CASE
  WHEN (YEAR(cout) = 2009 and month(cout) = 12) THEN 1
  ELSE 0
END) AS '2009-12',
SUM(CASE
  WHEN (YEAR(cout) = 2010 and month(cout) = 1) THEN 1
  ELSE 0
END) AS '2010-1',
SUM(CASE
  WHEN (YEAR(cout) = 2010 and month(cout) = 2) THEN 1
  ELSE 0
END) AS '2010-2',
SUM(CASE
  WHEN (YEAR(cout) = 2010 and month(cout) = 3) THEN 1
  ELSE 0
END) AS '2010-3',
SUM(CASE
  WHEN (YEAR(cout) = 2010 and month(cout) = 4) THEN 1
  ELSE 0
END) AS '2010-4',
SUM(CASE
  WHEN (YEAR(cout) = 2010 and month(cout) = 5) THEN 1
  ELSE 0
END) AS '2010-5',
SUM(CASE
  WHEN (YEAR(cout) = 2010 and month(cout) = 6) THEN 1
  ELSE 0
END) AS '2010-6',
SUM(CASE
  WHEN (YEAR(cout) = 2010 and month(cout) = 7) THEN 1
  ELSE 0
END) AS '2010-7',
SUM(CASE
  WHEN (YEAR(cout) = 2010 and month(cout) = 8) THEN 1
  ELSE 0
END) AS '2010-8',
SUM(CASE
  WHEN (YEAR(cout) = 2010 and month(cout) = 9) THEN 1
  ELSE 0
END) AS '2010-9',
SUM(CASE
  WHEN (YEAR(cout) = 2010 and month(cout) = 10) THEN 1
  ELSE 0
END) AS '2010-10',
SUM(CASE
  WHEN (YEAR(cout) = 2010 and month(cout) = 11) THEN 1
  ELSE 0
```

```
END) AS '2010-11',
SUM(CASE
  WHEN (YEAR(cout) = 2010 and month(cout) = 12) THEN 1
  ELSE 0
END) AS '2010-12',
SUM(CASE
  WHEN (YEAR(cout) = 2011 and month(cout) = 1) THEN 1
  ELSE 0
END) AS '2011-1',
SUM(CASE
  WHEN (YEAR(cout) = 2011 and month(cout) = 2) THEN 1
  ELSE 0
END) AS '2011-2',
SUM(CASE
  WHEN (YEAR(cout) = 2011 and month(cout) = 3) THEN 1
  ELSE 0
END) AS '2011-3',
SUM(CASE
  WHEN (YEAR(cout) = 2011 and month(cout) = 4) THEN 1
  ELSE 0
END) AS '2011-4',
SUM(CASE
  WHEN (YEAR(cout) = 2011 and month(cout) = 5) THEN 1
  ELSE 0
END) AS '2011-5',
SUM(CASE
  WHEN (YEAR(cout) = 2011 and month(cout) = 6) THEN 1
  ELSE 0
END) AS '2011-6',
SUM(CASE
  WHEN (YEAR(cout) = 2011 and month(cout) = 7) THEN 1
  ELSE 0
END) AS '2011-7',
SUM(CASE
  WHEN (YEAR(cout) = 2011 and month(cout) = 8) THEN 1
  ELSE 0
END) AS '2011-8',
SUM(CASE
  WHEN (YEAR(cout) = 2011 and month(cout) = 9) THEN 1
  ELSE 0
END) AS '2011-9',
SUM(CASE
  WHEN (YEAR(cout) = 2011 and month(cout) = 10) THEN 1
  ELSE 0
END) AS '2011-10',
SUM(CASE
  WHEN (YEAR(cout) = 2011 and month(cout) = 11) THEN 1
  ELSE 0
```

```
END) AS '2011-11',
SUM(CASE
  WHEN (YEAR(cout) = 2011 and month(cout) = 12) THEN 1
  ELSE 0
END) AS '2011-12',
SUM(CASE
  WHEN (YEAR(cout) = 2012 and month(cout) = 1) THEN 1
  ELSE 0
END) AS '2012-1',
SUM(CASE
  WHEN (YEAR(cout) = 2012 and month(cout) = 2) THEN 1
  ELSE 0
END) AS '2012-2',
SUM(CASE
  WHEN (YEAR(cout) = 2012 and month(cout) = 3) THEN 1
  ELSE 0
END) AS '2012-3',
SUM(CASE
  WHEN (YEAR(cout) = 2012 and month(cout) = 4) THEN 1
  ELSE 0
END) AS '2012-4',
SUM(CASE
  WHEN (YEAR(cout) = 2012 and month(cout) = 5) THEN 1
  ELSE 0
END) AS '2012-5',
SUM(CASE
  WHEN (YEAR(cout) = 2012 and month(cout) = 6) THEN 1
  ELSE 0
END) AS '2012-6',
SUM(CASE
  WHEN (YEAR(cout) = 2012 and month(cout) = 7) THEN 1
  ELSE 0
END) AS '2012-7',
SUM(CASE
  WHEN (YEAR(cout) = 2012 and month(cout) = 8) THEN 1
  ELSE 0
END) AS '2012-8',
SUM(CASE
  WHEN (YEAR(cout) = 2012 and month(cout) = 9) THEN 1
  ELSE 0
END) AS '2012-9',
SUM(CASE
  WHEN (YEAR(cout) = 2012 and month(cout) = 10) THEN 1
  ELSE 0
END) AS '2012-10',
SUM(CASE
  WHEN (YEAR(cout) = 2012 and month(cout) = 11) THEN 1
  ELSE 0
```

```
END) AS '2012-11',
SUM(CASE
  WHEN (YEAR(cout) = 2012 and month(cout) = 12) THEN 1
  ELSE 0
END) AS '2012-12',
SUM(CASE
  WHEN (YEAR(cout) = 2013 and month(cout) = 1) THEN 1
  ELSE 0
END) AS '2013-1',
SUM(CASE
  WHEN (YEAR(cout) = 2013 and month(cout) = 2) THEN 1
  ELSE 0
END) AS '2013-2',
SUM(CASE
  WHEN (YEAR(cout) = 2013 and month(cout) = 3) THEN 1
  ELSE 0
END) AS '2013-3',
SUM(CASE
  WHEN (YEAR(cout) = 2013 and month(cout) = 4) THEN 1
  ELSE 0
END) AS '2013-4',
SUM(CASE
  WHEN (YEAR(cout) = 2013 and month(cout) = 5) THEN 1
  ELSE 0
END) AS '2013-5',
SUM(CASE
  WHEN (YEAR(cout) = 2013 and month(cout) = 6) THEN 1
  ELSE 0
END) AS '2013-6',
SUM(CASE
  WHEN (YEAR(cout) = 2013 and month(cout) = 7) THEN 1
  ELSE 0
END) AS '2013-7',
SUM(CASE
  WHEN (YEAR(cout) = 2013 and month(cout) = 8) THEN 1
  ELSE 0
END) AS '2013-8',
SUM(CASE
  WHEN (YEAR(cout) = 2013 and month(cout) = 9) THEN 1
  ELSE 0
END) AS '2013-9',
SUM(CASE
  WHEN (YEAR(cout) = 2013 and month(cout) = 10) THEN 1
  ELSE 0
END) AS '2013-10',
SUM(CASE
  WHEN (YEAR(cout) = 2013 and month(cout) = 11) THEN 1
  ELSE 0
```

```
END) AS '2013-11',
SUM(CASE
  WHEN (YEAR(cout) = 2013 and month(cout) = 12) THEN 1
  ELSE 0
END) AS '2013-12',
SUM(CASE
  WHEN (YEAR(cout) = 2014 and month(cout) = 1) THEN 1
  ELSE 0
END) AS '2014-1',
SUM(CASE
  WHEN (YEAR(cout) = 2014 and month(cout) = 2) THEN 1
  ELSE 0
END) AS '2014-2',
SUM(CASE
  WHEN (YEAR(cout) = 2014 and month(cout) = 3) THEN 1
  ELSE 0
END) AS '2014-3',
SUM(CASE
  WHEN (YEAR(cout) = 2014 and month(cout) = 4) THEN 1
  ELSE 0
END) AS '2014-4',
SUM(CASE
  WHEN (YEAR(cout) = 2014 and month(cout) = 5) THEN 1
  ELSE 0
END) AS '2014-5',
SUM(CASE
  WHEN (YEAR(cout) = 2014 and month(cout) = 6) THEN 1
  ELSE 0
END) AS '2014-6',
SUM(CASE
  WHEN (YEAR(cout) = 2014 and month(cout) = 7) THEN 1
  ELSE 0
END) AS '2014-7',
SUM(CASE
  WHEN (YEAR(cout) = 2014 and month(cout) = 8) THEN 1
  ELSE 0
END) AS '2014-8',
SUM(CASE
  WHEN (YEAR(cout) = 2014 and month(cout) = 9) THEN 1
  ELSE 0
END) AS '2014-9',
SUM(CASE
  WHEN (YEAR(cout) = 2014 and month(cout) = 10) THEN 1
  ELSE 0
END) AS '2014-10',
SUM(CASE
  WHEN (YEAR(cout) = 2014 and month(cout) = 11) THEN 1
  ELSE 0
```

```
END) AS '2014-11',
SUM(CASE
  WHEN (YEAR(cout) = 2014 and month(cout) = 12) THEN 1
  ELSE 0
END) AS '2014-12',
SUM(CASE
  WHEN (YEAR(cout) = 2015 and month(cout) = 1) THEN 1
  ELSE 0
END) AS '2015-1',
SUM(CASE
  WHEN (YEAR(cout) = 2015 and month(cout) = 2) THEN 1
  ELSE 0
END) AS '2015-2',
SUM(CASE
  WHEN (YEAR(cout) = 2015 and month(cout) = 3) THEN 1
  ELSE 0
END) AS '2015-3',
SUM(CASE
  WHEN (YEAR(cout) = 2015 and month(cout) = 4) THEN 1
  ELSE 0
END) AS '2015-4',
SUM(CASE
  WHEN (YEAR(cout) = 2015 and month(cout) = 5) THEN 1
  ELSE 0
END) AS '2015-5',
SUM(CASE
  WHEN (YEAR(cout) = 2015 and month(cout) = 6) THEN 1
  ELSE 0
END) AS '2015-6',
SUM(CASE
  WHEN (YEAR(cout) = 2015 and month(cout) = 7) THEN 1
  ELSE 0
END) AS '2015-7',
SUM(CASE
  WHEN (YEAR(cout) = 2015 and month(cout) = 8) THEN 1
  ELSE 0
END) AS '2015-8',
SUM(CASE
  WHEN (YEAR(cout) = 2015 and month(cout) = 9) THEN 1
  ELSE 0
END) AS '2015-9',
SUM(CASE
  WHEN (YEAR(cout) = 2015 and month(cout) = 10) THEN 1
  ELSE 0
END) AS '2015-10',
SUM(CASE
  WHEN (YEAR(cout) = 2015 and month(cout) = 11) THEN 1
  ELSE 0
```



```
END) AS '2015-11',
SUM(CASE
  WHEN (YEAR(cout) = 2015 and month(cout) = 12) THEN 1
  ELSE 0
END) AS '2015-12',
SUM(CASE
  WHEN (YEAR(cout) = 2016 and month(cout) = 1) THEN 1
  ELSE 0
END) AS '2016-1',
SUM(CASE
  WHEN (YEAR(cout) = 2016 and month(cout) = 2) THEN 1
  ELSE 0
END) AS '2016-2',
SUM(CASE
  WHEN (YEAR(cout) = 2016 and month(cout) = 3) THEN 1
  ELSE 0
END) AS '2016-3',
SUM(CASE
  WHEN (YEAR(cout) = 2016 and month(cout) = 4) THEN 1
  ELSE 0
END) AS '2016-4',
SUM(CASE
  WHEN (YEAR(cout) = 2016 and month(cout) = 5) THEN 1
  ELSE 0
END) AS '2016-5',
SUM(CASE
  WHEN (YEAR(cout) = 2016 and month(cout) = 6) THEN 1
  ELSE 0
END) AS '2016-6',
SUM(CASE
  WHEN (YEAR(cout) = 2016 and month(cout) = 7) THEN 1
  ELSE 0
END) AS '2016-7',
SUM(CASE
  WHEN (YEAR(cout) = 2016 and month(cout) = 8) THEN 1
  ELSE 0
END) AS '2016-8',
SUM(CASE
  WHEN (YEAR(cout) = 2016 and month(cout) = 9) THEN 1
  ELSE 0
END) AS '2016-9',
SUM(CASE
  WHEN (YEAR(cout) = 2016 and month(cout) = 10) THEN 1
  ELSE 0
END) AS '2016-10',
SUM(CASE
  WHEN (YEAR(cout) = 2016 and month(cout) = 11) THEN 1
  ELSE 0
```

```
END) AS '2016-11',
SUM(CASE
  WHEN (YEAR(cout) = 2016 and month(cout) = 12) THEN 1
  ELSE 0
END) AS '2016-12',
SUM(CASE
  WHEN (YEAR(cout) = 2017 and month(cout) = 1) THEN 1
  ELSE 0
END) AS '2017-1',
SUM(CASE
  WHEN (YEAR(cout) = 2017 and month(cout) = 2) THEN 1
  ELSE 0
END) AS '2017-2',
SUM(CASE
  WHEN (YEAR(cout) = 2017 and month(cout) = 3) THEN 1
  ELSE 0
END) AS '2017-3',
SUM(CASE
  WHEN (YEAR(cout) = 2017 and month(cout) = 4) THEN 1
  ELSE 0
END) AS '2017-4',
SUM(CASE
  WHEN (YEAR(cout) = 2017 and month(cout) = 5) THEN 1
  ELSE 0
END) AS '2017-5',
SUM(CASE
  WHEN (YEAR(cout) = 2017 and month(cout) = 6) THEN 1
  ELSE 0
END) AS '2017-6',
SUM(CASE
  WHEN (YEAR(cout) = 2017 and month(cout) = 7) THEN 1
  ELSE 0
END) AS '2017-7',
SUM(CASE
  WHEN (YEAR(cout) = 2017 and month(cout) = 8) THEN 1
  ELSE 0
END) AS '2017-8',
SUM(CASE
  WHEN (YEAR(cout) = 2017 and month(cout) = 9) THEN 1
  ELSE 0
END) AS '2017-9',
SUM(CASE
  WHEN (YEAR(cout) = 2017 and month(cout) = 10) THEN 1
  ELSE 0
END) AS '2017-10',
SUM(CASE
  WHEN (YEAR(cout) = 2017 and month(cout) = 11) THEN 1
  ELSE 0
```

```
END) AS '2017-11',
SUM(CASE
  WHEN (YEAR(cout) = 2017 and month(cout) = 12) THEN 1
  ELSE 0
END) AS '2017-12'
FROM
  spl_2016.outraw
WHERE
  title = 'Blade Runner' or title = 'Do Androids Dream of Electric Sheep'
GROUP BY bibNumber , title, callNumber
ORDER BY Counts DESC
```