

Infectious Nostalgia

Luis Chavez Carrillo

Why is it Infectious?

Infectious Nostalgia is a series of several images generated via Stable Diffusion, with parameters aiming to invoke emotional attachment to the objects within each image by tapping into a nostalgia for a time which they wish they could return to, whether they were alive back then or not. The Retrowave and Synthwave parameters utilize colors and lighting reminiscent of the 1980's, causing a longing for those days in the viewer that will result in them mentally associating the subject matter with that aesthetic, and consequently, with that nostalgic, longing attachment. Because of the nature of AI image generation, the subject matter is interchangeable with various things, of which can include phone models, automobiles, or even organic beings like dogs. The overall goal of these images is to sway individuals who may have been opposed to liking these specific objects, to falling in love with their associated beauty.



Refiner: v1-5-pruned-emaonly.safetensors [6ce0161689] Sampler: DPM++ 2M Karras
Steps: 20 Seed: -1 1024x1024 CFG:4.5

Prompt: modern camaro, professional camera, retrowave aesthetic, synthwave, light
rain, blooming light, light fog



Refiner: v1-5-pruned-emaonly.safetensors [6ce0161689] Sampler: DPM++ 2M Karras
Steps: 20 Seed: -1 CFG: 4.5 1024x1024

Prompt: modern mustang, professional camera, retrowave aesthetic, synthwave, light
rain, blooming light, light fog



Refiner: v1-5-pruned-emaonly.safetensors [6ce0161689] Sampler: DPM++ 2M
Karras Steps: 20 Seed: -1 CFG: 17 1024x1024

jeep wrangler, professional camera, retrowave aesthetic, synthwave, light rain,
blooming light, light fog



Refiner: v1-5-pruned-emaonly.safetensors [6ce0161689] Sampler: DPM++
2M Karras Steps: 20 Seed: -1 CFG: 17 1024x1024

Prompt: iphone 14 on a table, professional camera, retrowave aesthetic,
synthwave, light rain, blooming light, light fog



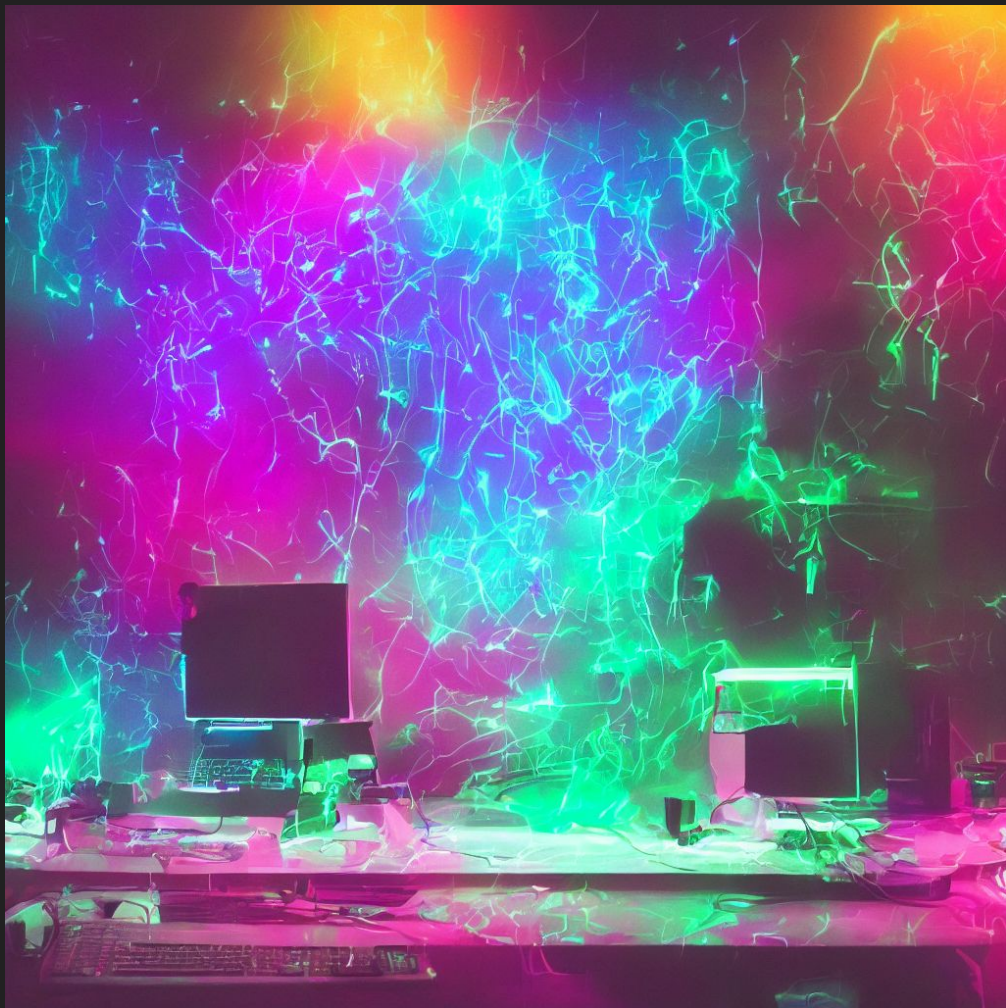
Refiner: v1-5-pruned-emaonly.safetensors [6ce0161689] Sampler: DPM++
2M Karras Steps: 20 Seed: -1 CFG: 17 1024x1024

Prompt: iphone 14 on a table, professional camera, retrowave aesthetic,
synthwave, light rain, blooming light, light fog



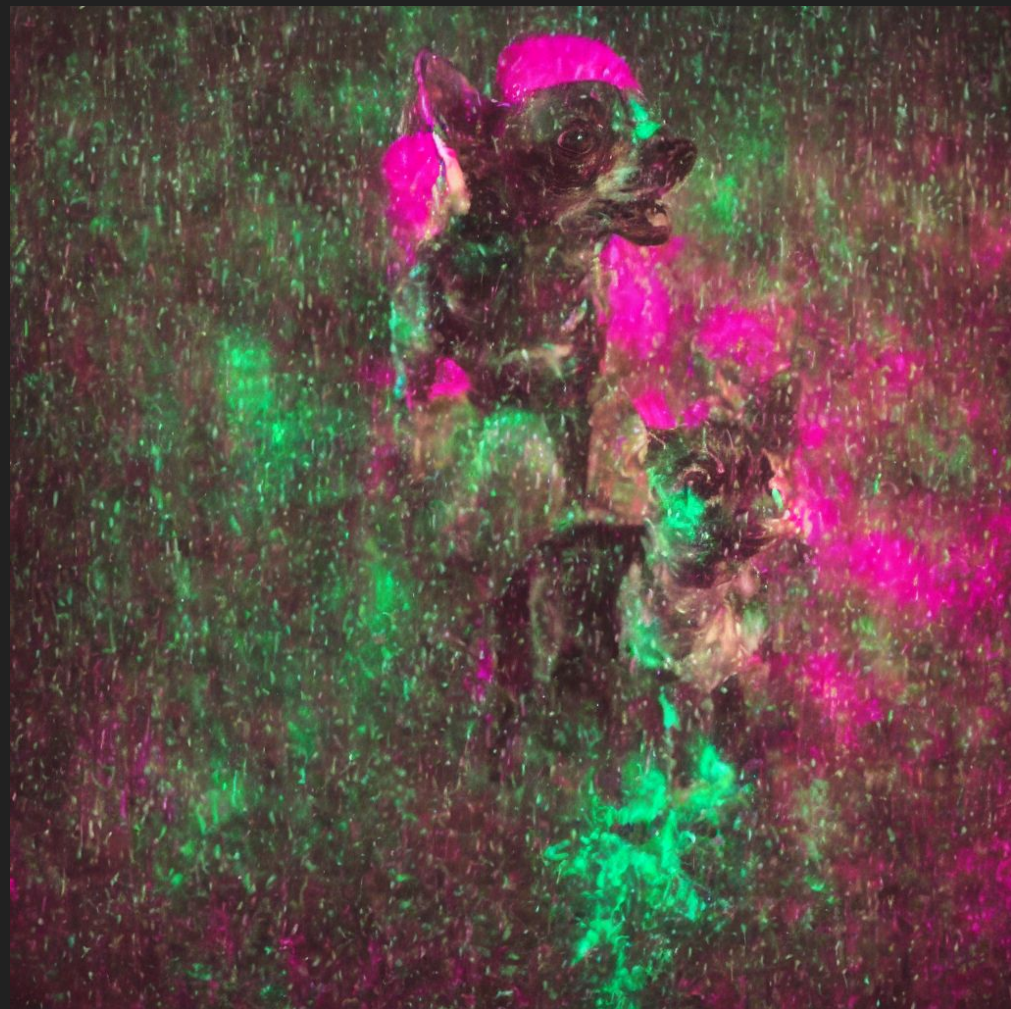
Refiner: v1-5-pruned-emaonly.safetensors [6ce0161689] Sampler: DPM++
2M Karras Steps: 20 Seed: -1 CFG: 17 1024x1024

Prompt: rgb lit desktop computer on a table, professional camera,
retrowave aesthetic, synthwave, light rain, blooming light, light fog



Refiner: v1-5-pruned-emaonly.safetensors [6ce0161689] Sampler: DPM++
2M Karras Steps: 20 Seed: -1 CFG: 4.5 1024x1024

Prompt: rgb lit desktop computer on a table, professional camera,
retrowave aesthetic, synthwave, light rain, blooming light, light fog



Refiner: v1-5-pruned-emaonly.safetensors [6ce0161689] Sampler: DPM++
2M Karras Steps: 20 Seed: -1 CFG: 4.5 1024x1024

Prompt: chihuahua panting in center, professional camera, retrowave
aesthetic, synthwave, light rain, blooming light, light fog



Refiner: v1-5-pruned-emaonly.safetensors [6ce0161689] Sampler: DPM++
2M Karras Steps: 20 Seed: -1 CFG: 17 1024x1024

Prompt: chihuahua panting in center, professional camera, retrowave
aesthetic, synthwave, light rain, blooming light, light fog



Refiner: v1-5-pruned-emaonly.safetensors [6ce0161689] Sampler: DPM++
2M Karras Steps: 20 Seed: -1 CFG: 17 1024x1024

Prompt: chihuahua panting in center, professional camera, retrowave
aesthetic, synthwave, light rain, blooming light, light fog

Evaluation

Across all generated images in this series, the consistency of purples and pink coloring was due to the retrowave and synthwave parameters. Despite not being explicitly stated in the prompt, the dominance of the colors represents the AI's understanding of those two genres relying heavily on those specific color types. Camera angles are not always consistent, however, this is a result of not specifying which angle I want, as well as it likely being determined by the seed it's using. Subject positioning was not always centered when specified as well, once again likely due to the seed selected combined with the CFG scale being high enough to utilize more of the base trainer image. The final few images of the chihuahuas were meant to show a happy looking dog, with its tongue sticking out, however, the bot may have interpreted "panting" as "painting" which resulted in the differences in effects shown in the images compared to previous batches. The reason for the change from technological subject matter to organic house pets, is to further test the idea of how artificially created nostalgia can sway an individual's opinion of things they may have disliked, such as the dog breed often cited as demonic. However, I also really like chihuahuas, as I own one myself. All in all, the core stylization is preserved across all the images, despite the different subject matter, through the use of its color palette. Further control over the images is likely possible with longer, more specific prompts, as well as a compatible CFG scale to make it less like a sample image.